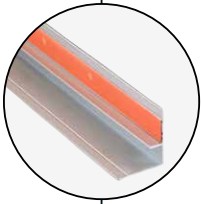




Installation of Fibo Kitchen Board



L-shaped finishing profile
The L-shaped finishing profile is made for covering the cut surfaces.



Hidden internal corner
Use the hidden internal corner profile to connect two panels in the corner. The profile will not be visible when the installation is done.

Renew your kitchen in less than a day!

Use the Fibo Kitchen Board as a decorative wall between the worktop and cabinets in your kitchen. Mount directly on the studs or existing wall to create a stylish kitchen. Fibo Kitchen Board is 100% waterproof and has a durable surface - with a 25 year warranty!

Our unique Aqualock click-lock makes the installation easy, and by using our accessory products we guarantee a durable result that is maintenance-free and easy to clean.



1. Stick it



2. Click it

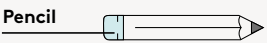


3. Finish it

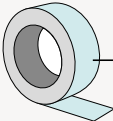


Use the Fibo accessories which are developed to ensure a perfect end result.


TOOLS FOR INSTALLATION



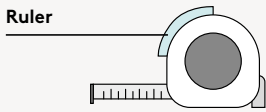
Pencil



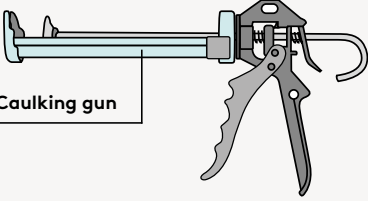
Masking tape



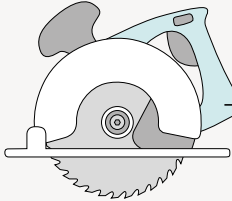
Utility knife



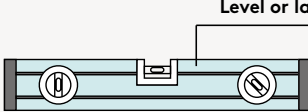
Ruler




Caulking gun



Hand saw/Jigsaw/Circular saw



Level or laser



Hacksaw

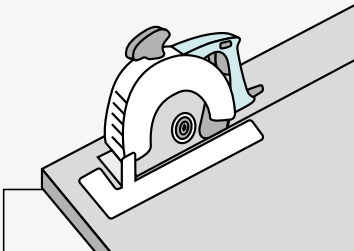
PREPARATIONS

Fibo Kitchen Board with tile pattern

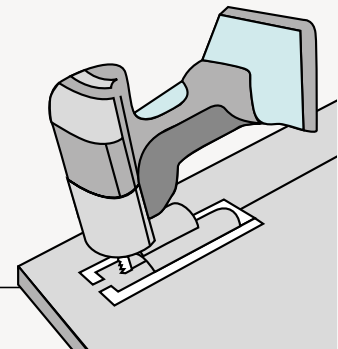
Measure the total length of the wall and consider centering the tile pattern before starting the installation to achieve uniformed tile sizes.

The surface must be flat, irregularities removed/sanded. When installing on top of tiles, make sure the surface is clean and degreased.

CUTTING PANELS

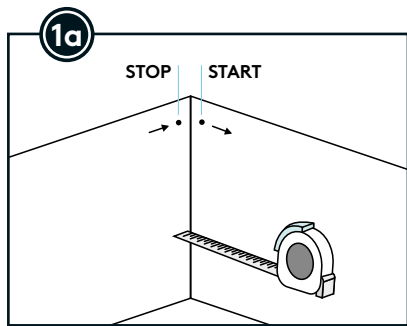
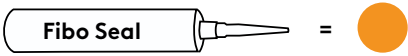


Decorside facing down

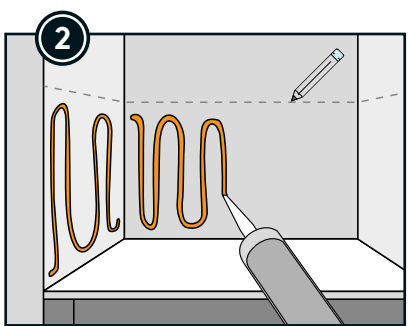


Decorside facing down

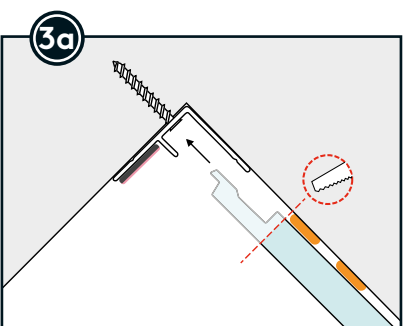
Installation of Fibo Kitchen Board



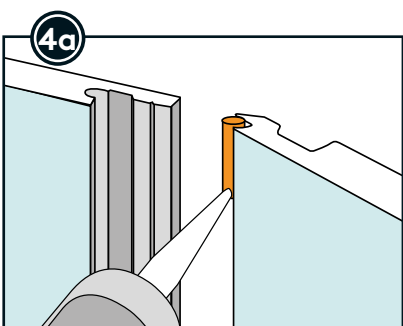
Measure the are where to cover with Fibo Kitchen Board. Start installation from left to right.



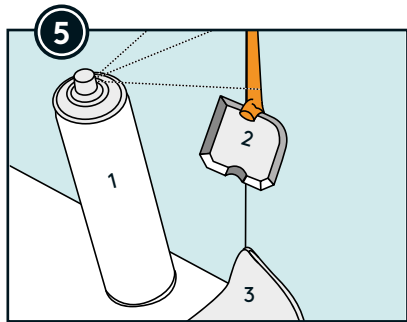
Measure installation height, and apply glue to the backwall.



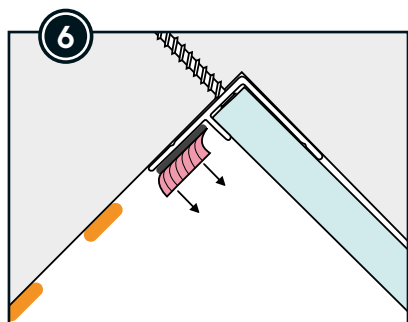
Attatch the corner profile with screws. Slide the first panel into the corner profile.



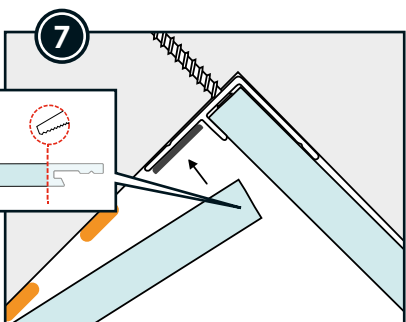
Apply Fibo Seal in the sealing lip on the left hand side of the next panel.



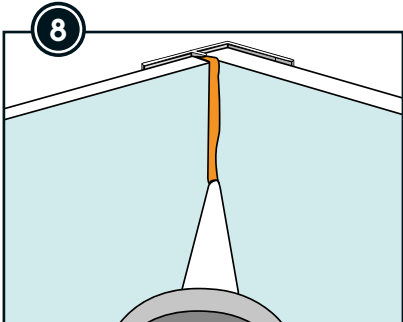
1. Spray with Fibo Clean
2. Remove with Fibo Sealing Tool
3. Finish with Fibo Wipes



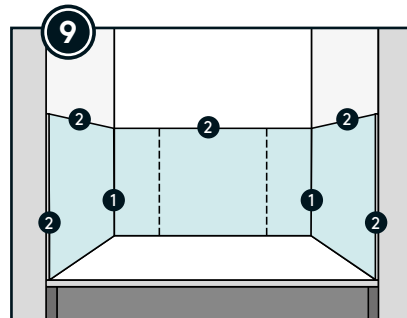
Remove tape film from the corner profile.



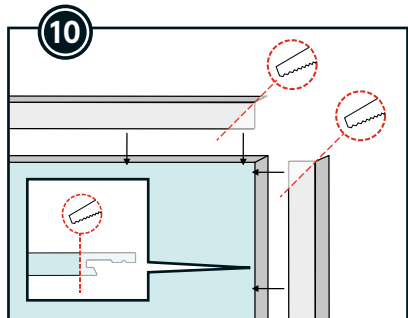
Adjust the last panel before clicking it into place.



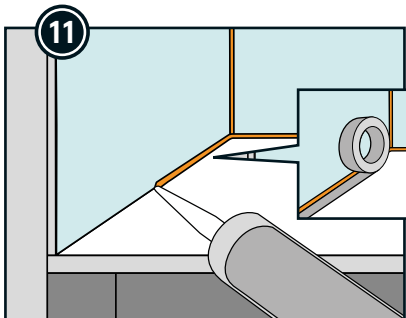
Apply Fibo Seal in corner and remove excess with Fibo Clean and Fibo Sealing Tool.



1. Internal corner profiles
2. Covering L-profiles to hide cut surfaces

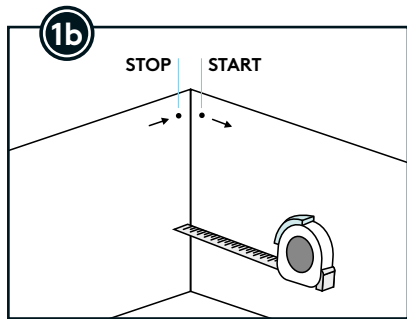


Measure and cut finishing profile/L-profile. Dryfit before applying it with Fibo Seal onto the panel. Remove excess sealant with Fibo Clean, Fibo Sealing Tools and finish with Fibo Wipes.

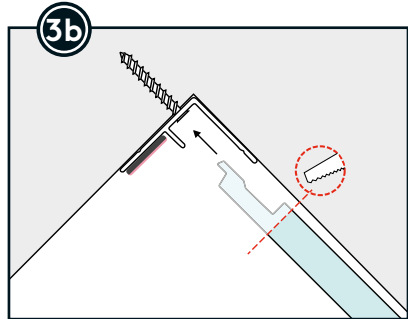


Place a masking tape on the worktop before sealing. Use Fibo Seal to hide transition between Kitchen Board and worktop. Make sure to remove all excess sealant with Fibo Clean, Fibo Sealing Tools and Fibo Wipes.

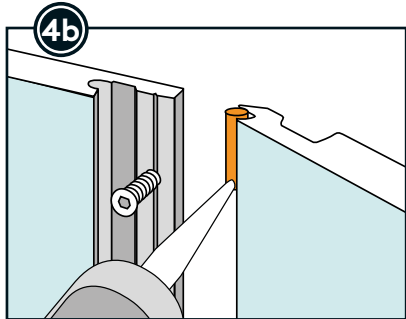
Installation of Fibo Kitchen Board using screws instead of glue



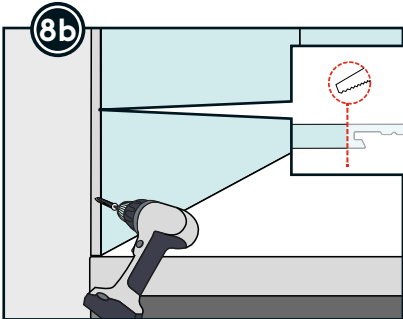
Measure the are where to cover with Fibo Kitchen Board. Start installation from left to right.



Attatch the corner profile with screws. Slide the first panel into the corner profile.



Place an installation screw in the screw lip on the right hand side of the panel. The screws will replace glue/Fibo Seal on the backwall. Apply Fibo Seal in the sealing lip on the left hand side of the next panel.



Clean cut the last panel. Attach a screw on the edge before the finishing L-profile is installed.