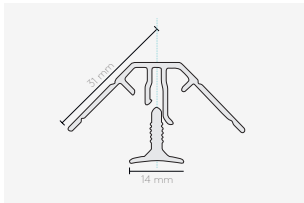
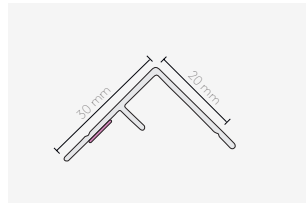


# Aluminium Profiles

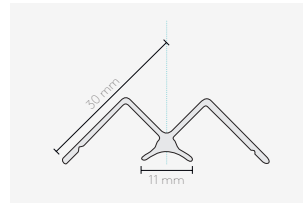
## PROFILES IN ALUMINIUM | CROSS SECTION



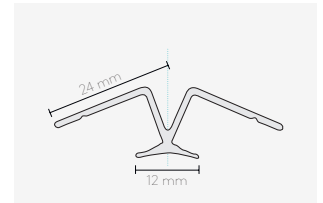
ALU PROFILES, TWO PART  
**INTERNAL CORNER PROFILE**



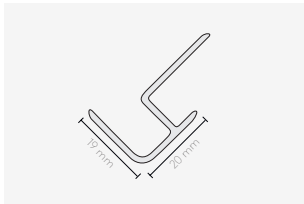
HIDDEN CORNER PROFILE FOR GLUING  
**INTERNAL CORNER PROFILE**



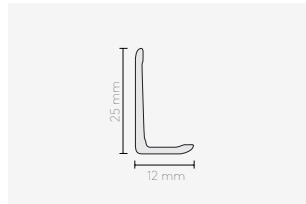
ALU PROFILE  
**INTERNAL CORNER PROFILE**



ALU PROFILE, 135°  
**INTERNAL CORNER PROFILE**



ALU PROFILE  
**EXTERNAL CORNER PROFILE**



ALU PROFILES  
**L-PROFILE WIDE**



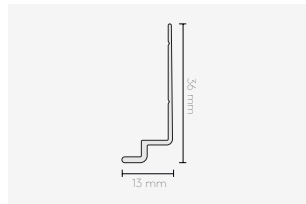
ALU PROFILES  
**L-PROFILE SMALL**



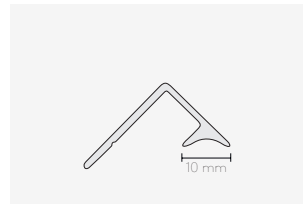
ALU PROFILE, 135°  
**EXTERNAL CORNER PROFILE**



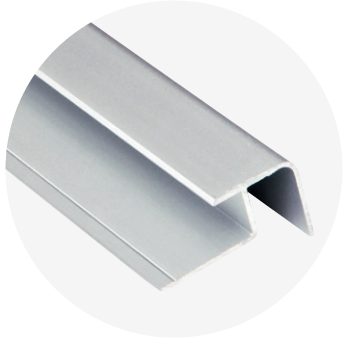
ALU PROFILE, TWO PART  
**STACKING PROFILE**



ALU PROFILE  
**BASE PROFILE**



ALU PROFILE FOR CISTERN  
**COMBI PROFILE**



**ALU PROFILES** PRECUT AND PACKED INDIVIDUALLY

PRODUCT	MATERIAL	TREATMENT	COLOR
Alu profiles	EN AW 6060 (573-3) / EB AW-6063 T6	Anodized	Alu
White alu profiles	EN AW-6063 T6	Lacquered	RAL9016
Black Alu profiles	EN AW-6063 T6	Lacquered	RAL9005

**GENERAL INFORMATION ABOUT DETERGENTS**

Detergents for private consumers, as well as general detergents for large consumers, are rarely corrupt. However, they may seem irritating to the skin, the higher or lower pH value they have. Lukewarm water is for regular cleaning. Gloves should be used for prolonged contact with concentrated products or solutions, as the cleaning agents can dry out the skin.

Be careful with inhalation of aerosols (shower / spray bottle) as these may irritate the mucous membranes.

**GOOD ADVICE**

Always apply the detergent where it is the most "dirty" first and wipe these areas last so that the detergent will last for the longest time to work before drying out.

Publishing date 27.01.2023