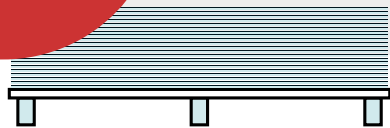


Monteringsanvisning veggpanel - steg 1-6

Installation instruction wall panel - step 1-6

LES FØR PANEL-
PAKKEN ÅPNES!
Read before opening
package!



Lagring | Storage

Lagre panelene tørt og liggende i emballasjen frem til montering.

Keep panels dry stored and flat in package until installation.

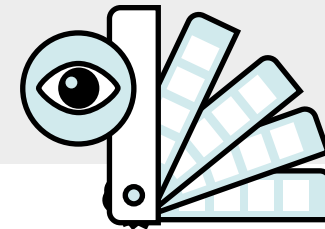


Min. 72 timer | Min. 72 hours

Akklimatiser emballerte paneler i romtemperatur i minst 72 timer (mer hvis de har vært på kaldt lager).

Luftfuktigheten i rommet må være mer enn **30% både under og etter montering.**

Store panels in package in room conditions for at least 72 hour acclimatization (longer if they have been kept in a cold area). Humidity in the room must be above 30% during installation.



Visuell kontroll | Visual control

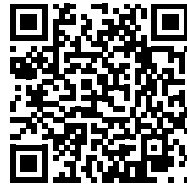
Kontroller farge og sjekk for andre feil før montering.

Colourmatch and check for flaws before installation

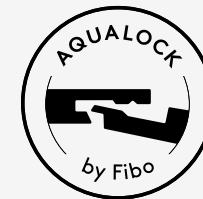
Walls built for life

For å sikre holdbarhet på dine vegger i flere tiår, er Fibo veggpanel produsert med en kjerne av kryssfiner mellom balanselaminat i bakkant og et dekorativt høytrykkslaminat i front og som er enkelt å rengjøre og vedlikeholde. Fibo Aqualock gir enkel montering og et varig resultat.

To ensure that your walls are durable and will last for decades, Fibo wall panels are made from a plywood core layered between a balancing layer and a decorative high pressure laminate that is easy to clean and maintain. Fibo Aqualock makes the installation easy and provide a consistent result.



Installation in both
Norwegian and English



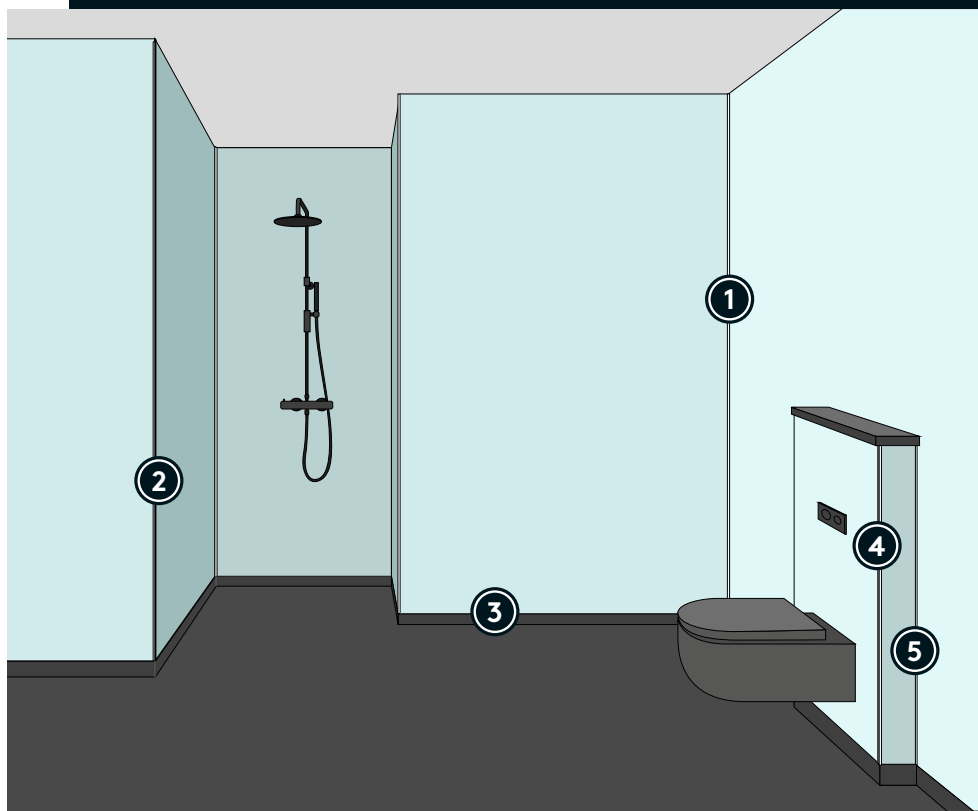
Inspirasjon og monteringsfilmer på/Installation videos at fibo.no | E-mail: info@fibosystem.com.

FIBO TILBEHØR | FIBO ACCESSORIES



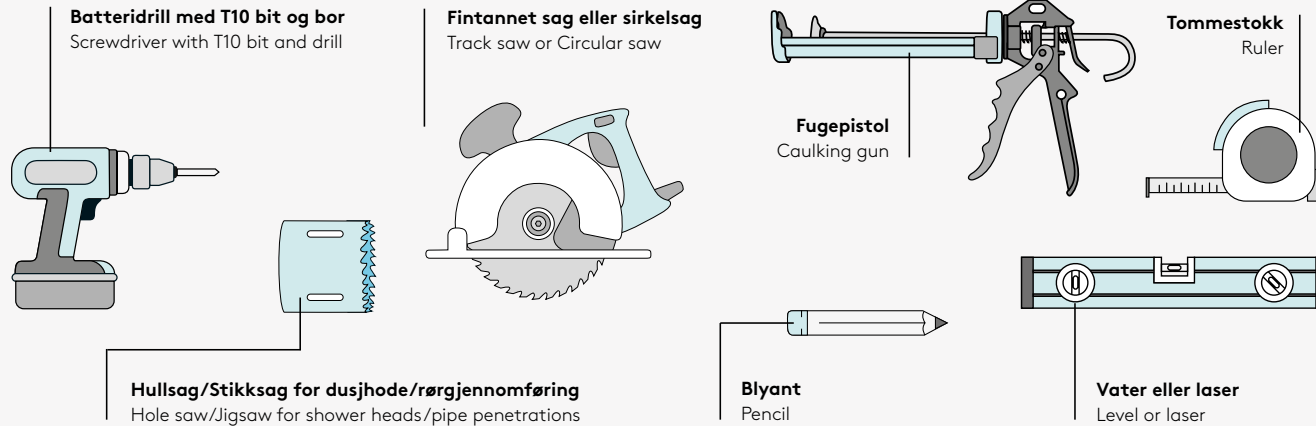
Vask bort rester fra Fibo Wipes umiddelbart med såpevann!
Remove residue from Fibo Wipes immediately with soap water!

Fibo erstatter dampsperre på yttervegg når alle overganger er forseglet.
Fibo replaces vapor barrier when all joints are sealed.



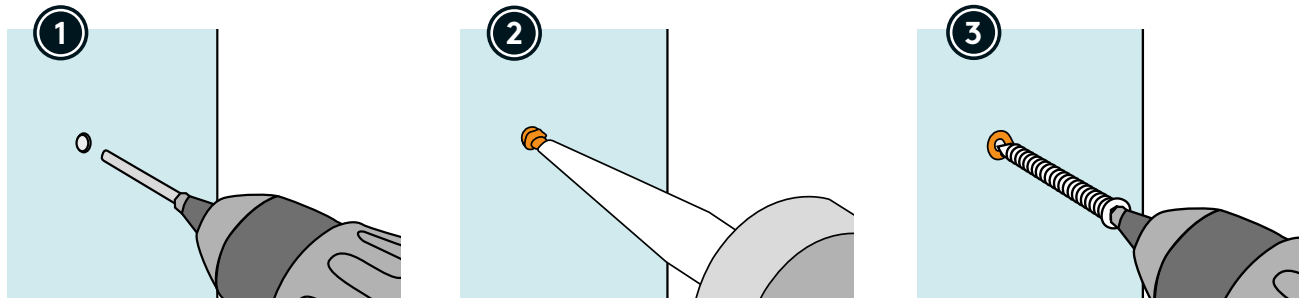
	Internal Corner		External Corner	
	①		②	
	2-delt Innvendig Hjørneprofil 2-part Internal Corner profile	Skjult innvendig hjørneprofil Hidden Internal Corner profile	Standard Innvendig Hjørneprofil II Standard Internal Corner profile II	Utvendig hjørneprofil II External Corner profile II
	Base Profile	L-Profile		Combi Profile
	③	④	⑤	
	Sokkelprofil Base profile	L-profil II Smal L-profile II Small	L-profil II Bred L-profile II Wide	Kombiprofil Combi profile

VERKTØY DU TRENGER | TOOLS YOU NEED



⚠ ADVARSEL: Verktøy må håndteres med forsiktighet for å unngå skade på paneler.
WARNING: Power tools must be used with caution to prevent damaged panels.

HVORDAN TETTE SKRUEHULL I PANEL | HOW TO COVER SCREWHOLE IN PANEL



RENGJØRING & VEDLIKEHOLD | CLEANING & MAINTENANCE

Forleng fugemassens levetid ved korrekt rengjøring, i henhold til FDV på fibo.no. Spesielt fugemasse i sokkelprofil og skjult innvendig hjørne for fugging bør rengjøres regelmessig. Hvis fugemasse blir sprø eller skadet over tid, må den behandles umiddelbart.

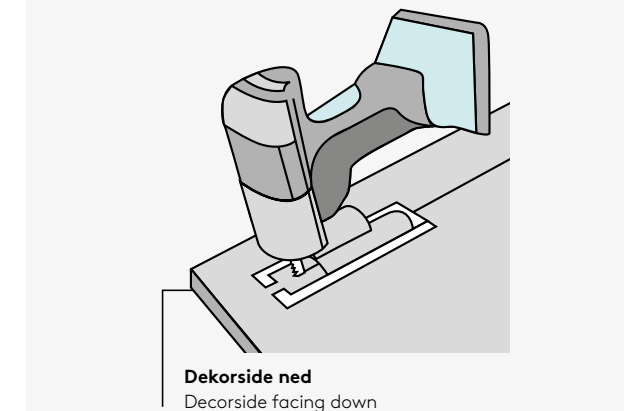
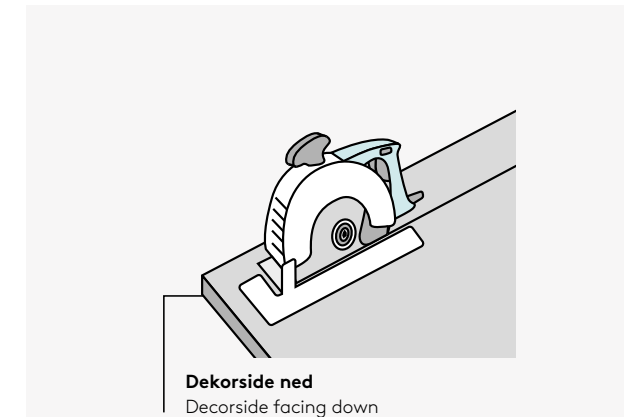
Fuktet melaminsvamp (Fibo Sponge) kan brukes på særlig vanskelige flekker. Følg bruksanvisning på produktets emballasje.

Extend the life of the sealant by correct cleaning, in accordance with "Cleaning & Maintenance" documents at fibosystem.com. In particular, sealant in the base profile and hidden internal corner profile should be cleaned regularly. If the sealant becomes brittle or damaged over time, it must be treated immediately.

A moist Fibo Sponge can be used on particularly difficult surfaces stains. Follow the instructions for use on the product's packaging.

KUTTING AV PANEL

CUTTING PANELS



1

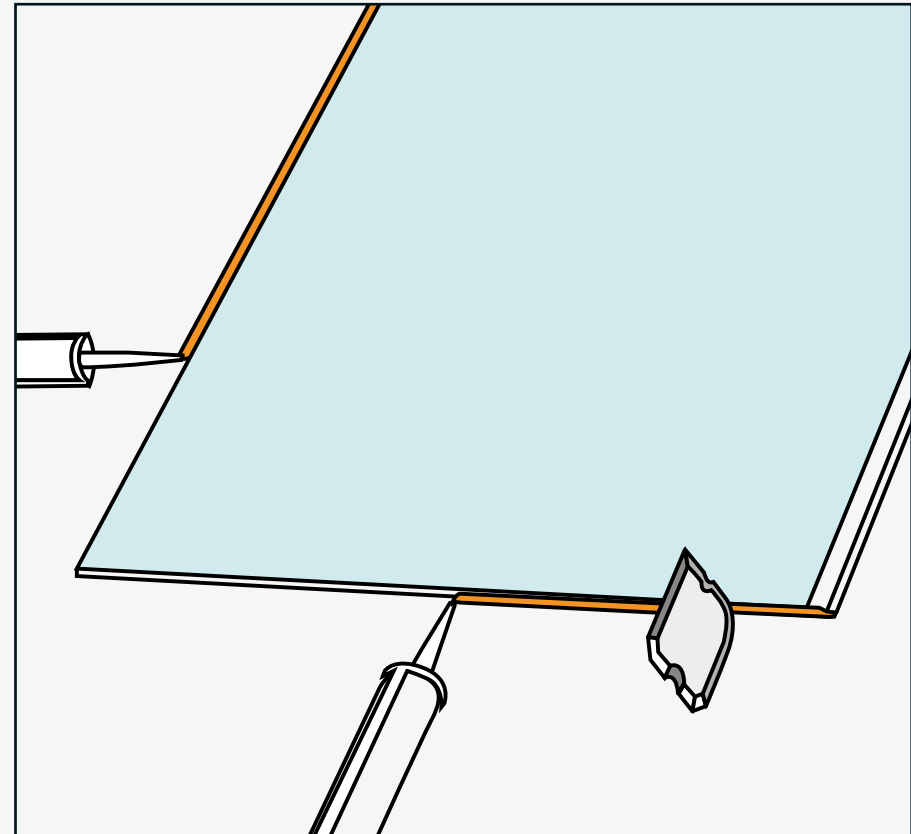
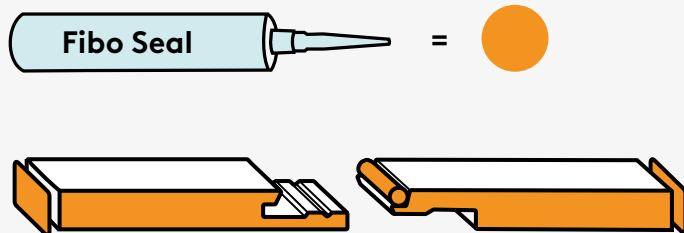
HVORDAN FUGE FIBO? HOW TO SEAL FIBO?

HVORDAN FUGE FIBO VEGGPANEL

For vanntett system, påfør Fibo Seal som vist under. Alle kuttflater og kryssfiner i bunn av panel skal forsegles også ved hulltaking til rørgjennomføring. Ved mangelfull montering bortfaller garanti. Bruk Fibo Clean og Fibo Wipes for å fjerne overflødig fugemasse. Film fra rengjøringstilbehør skal fjernes umiddelbart fra panelene.

HOW TO SEAL FIBO WALL PANELS

For watertight system, apply Fibo Seal as shown beneath. All cutting surfaces and bottom edge of panel must be sealed, also when drilling holes for pipe penetration. Incorrect installation will void your warranty. Use Fibo Clean and Fibo Wipes to remove excessive sealant. Film from cleaning accessories shall be removed immediately from panel surface.

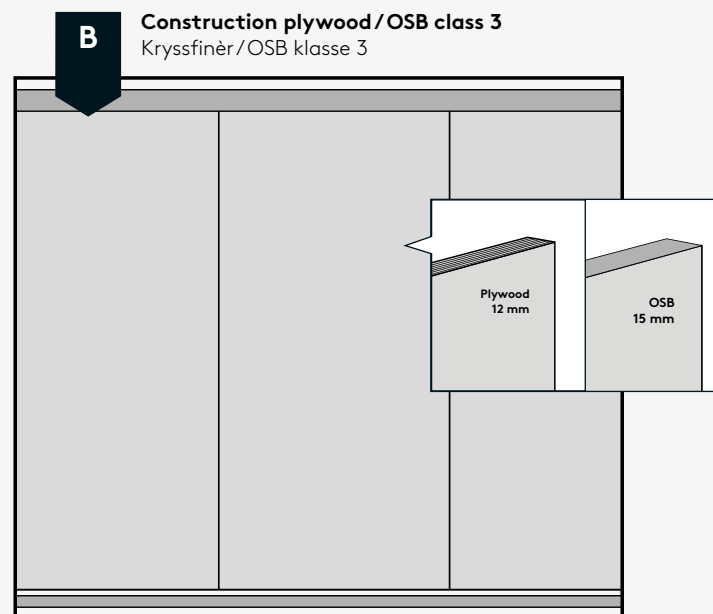
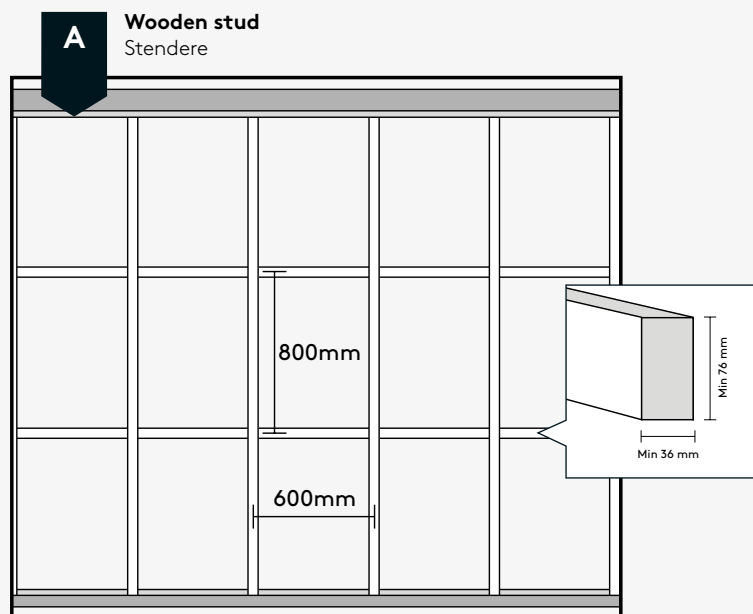


2A

VELG RIKTIG BAKVEGG BACKWALL OPTIONS

Benytt ekstra støtte i bakvegg dersom det skal monteres tunge gjenstander som skap, toalett, dusjsete, støttehåndtak eller lignende. Planhetstoleranse: Maksimalt planhetsavvik på +/- 2 mm/2 meter. Det er ikke behov for dampsperre eller membran bak veggpanelene.

Extra support in backwall must be used if heavy objects such as cabinets, toilets, shower seats, support handles or similar is to be installed. Flatness tolerance: Maximum flatness deviation of +/- 2 mm/2 meters. There is no need for extra membrane behind our wall panels.

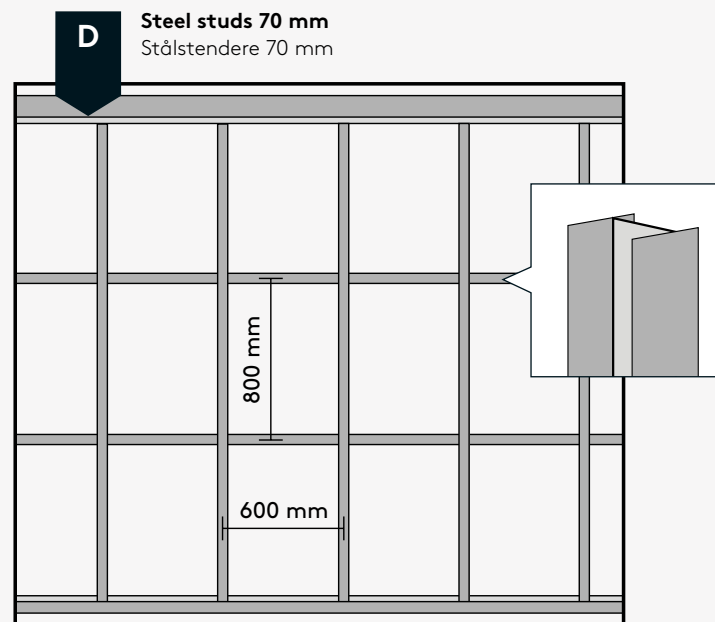
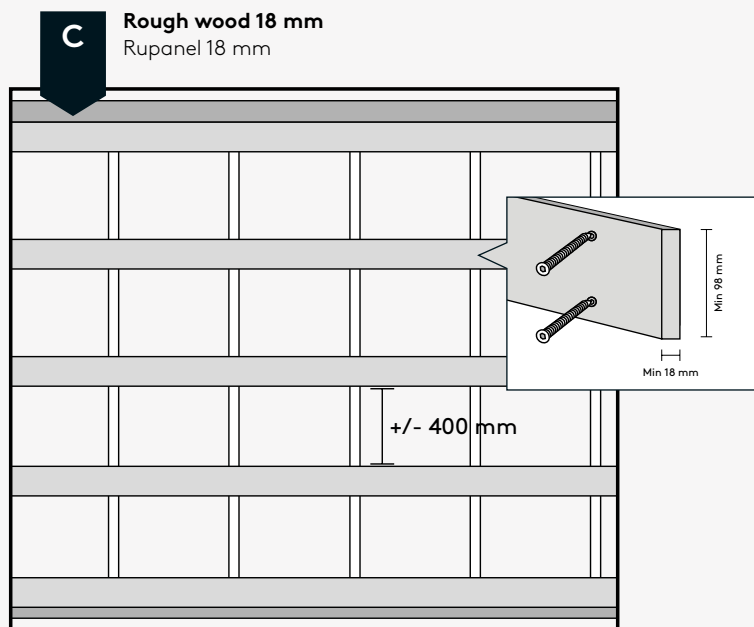


2B

VELG RIKTIG BAKVEGG BACKWALL OPTIONS

Benytt ekstra støtte i bakvegg dersom det skal monteres tunge gjenstander som skap, toalett, dusjsete, støttehåndtak eller lignende. Planhetstoleranse: Maksimalt planhetsavvik på +/- 2 mm/2 meter. Det er ikke behov for dampsperre eller membran bak veggpanelene.

Extra support in backwall must be used if heavy objects such as cabinets, toilets, shower seats, support handles or similar is to be installed. Flatness tolerance: Maximum flatness deviation of +/- 2 mm/2 meters. There is no need for extra membrane behind our wall panels.

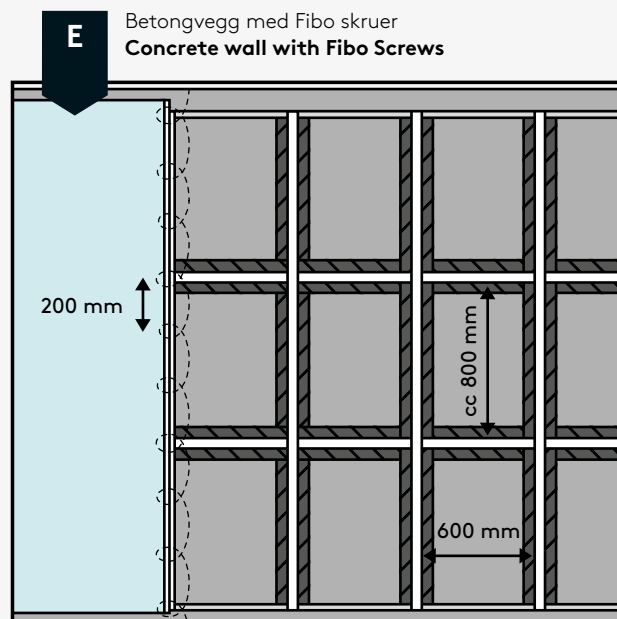


2C

VELG RIKTIG BAKVEGG BACKWALL OPTIONS

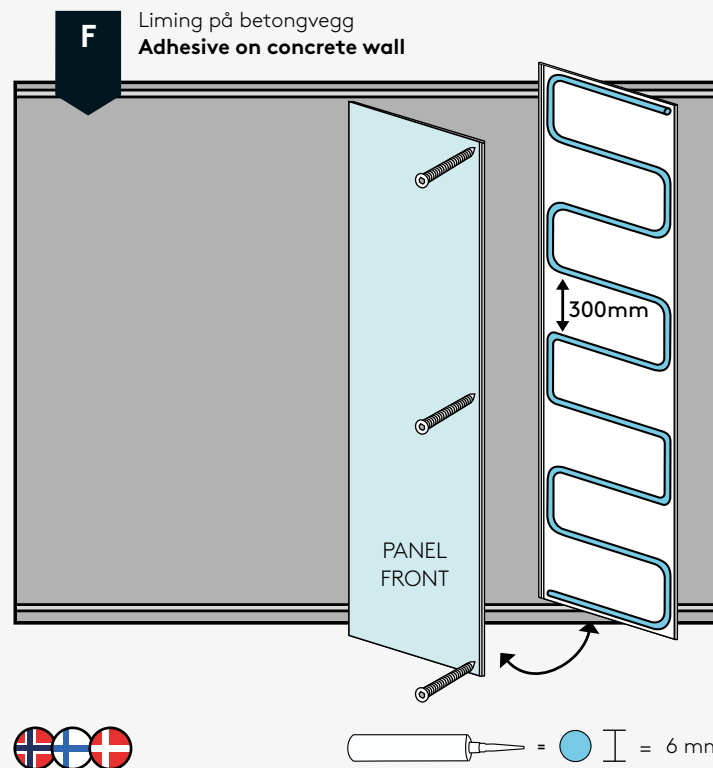
Benytt ekstra støtte i bakvegg dersom det skal monteres tunge gjenstander som skap, toalett, dusjsete, støttehåndtak eller lignende. Planhetstoleranse: Maksimalt planhetsavvik på +/- 2 mm/2 meter. Det er ikke behov for dampsperre eller membran bak veggpanelene.

Extra support in backwall must be used if heavy objects such as cabinets, toilets, shower seats, support handles or similar is to be installed. Flatness tolerance: Maximum flatness deviation of +/- 2 mm/2 meters. There is no need for extra membrane behind our wall panels.



Ved montering på betong- eller teglvegger med skruer skal panelene festes til vertikale og horisontale lekter med dimensjoner min. 23 mm x 48 mm. Lektene skal monteres c/c 0,8 m med bred side mot vegg, med kapillært hindrende lag mellom de innerste lektene og betongveggen.

When installed on concrete or brick walls with screws, the panels shall be fixed to vertical and horizontal battens with dimensions min. 23 mm x 48 mm. The battens shall be installed c/c 0,8 m with the wide side flat, with a capillary obstructing layer between the inner battens and the concrete wall.



Fibo Seal in combination with screws, or glue with initial grab. Make sure to screw the first panel as shown.

Ved liming av panel til vegg av betong, sørg for at veggen er tørr (RH<85%/CM<2%), jevn og rengjort. Husk skruer på første panel - se figur.

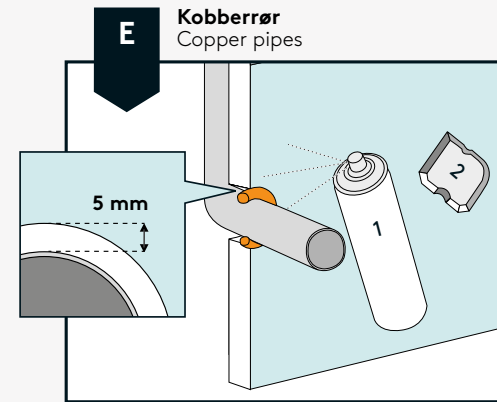
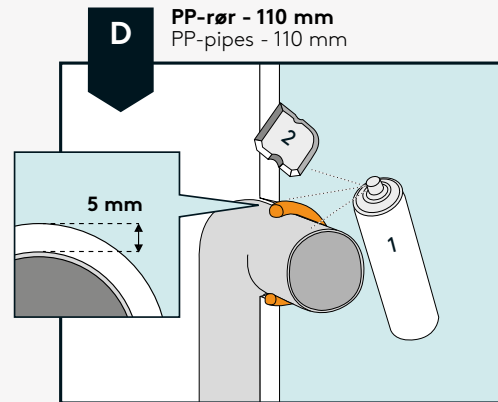
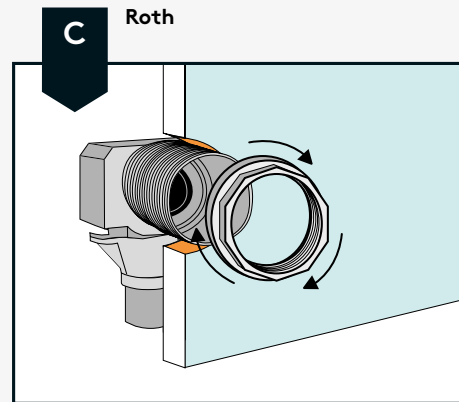
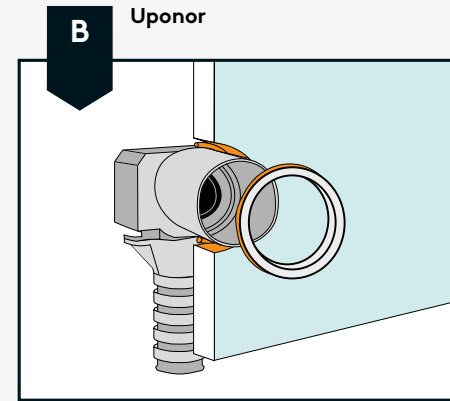
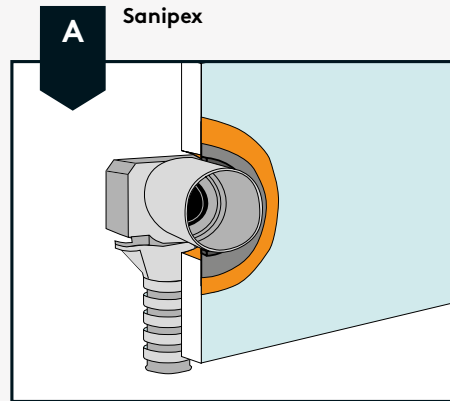
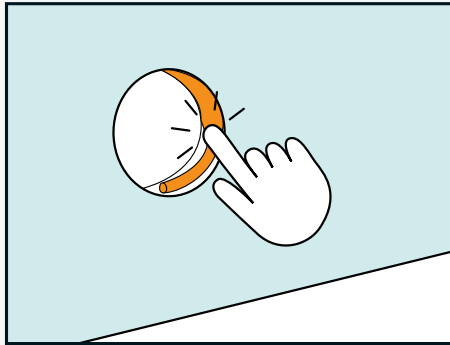
3

ULIKE LØSNINGER FOR RØRGJENNOMFØRINGER DIFFERENT PIPE SOLUTIONS

Kuttflater skal forsegles ved hulltaking til rørgjennomføring. For fullstendig monteringsanvisning av EAD 030437-00-0503 godkjente løsninger, følg veggboкс-produzentenes anvisninger. Godkjenning av PP- og kobberrør er dokumentert i SINTEF Teknisk Godkjenning 2289.

Cutting surfaces must be sealed when drilling holes for pipe penetration. For complete installation guidance, follow the wall box producers' instructions. The ones illustrated are EAD 030437-00-0503 approved systems. Approval for PP- and copper pipes is documented through SINTEF Technical Approval 2289.

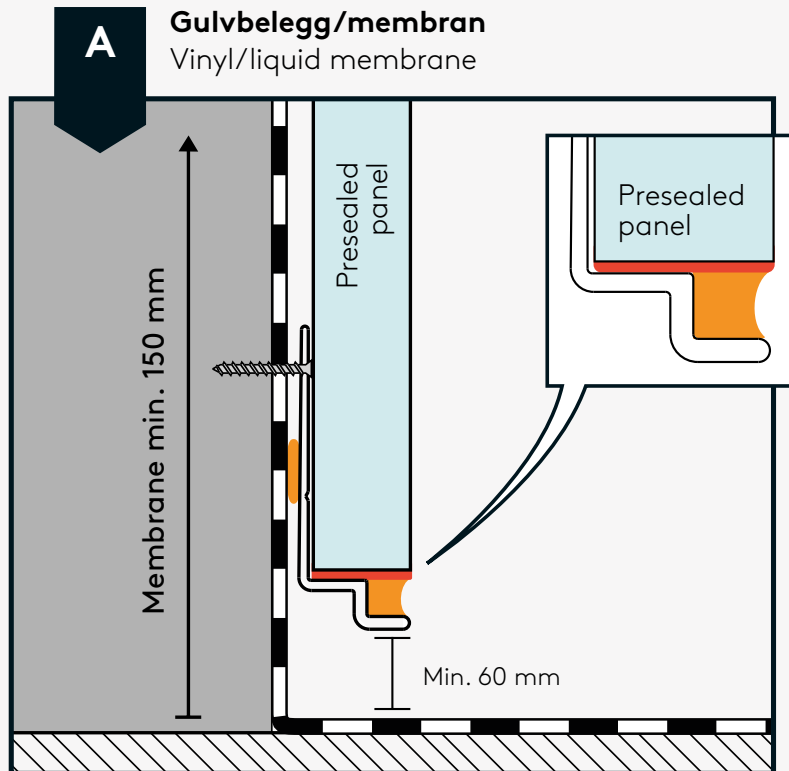
Første steg i alle tilfeller
First step in all cases



 BVN 34.510

4A

AVSLUTNING MOT GULVMEMBRAN CHOOSE TRANSITION TO FLOOR MEMBRANE



Universelt godkjente løsninger, testet i henhold til EAD 030437-00-0503.
Universal approved solutions, tested according to EAD 030437-00-0503.

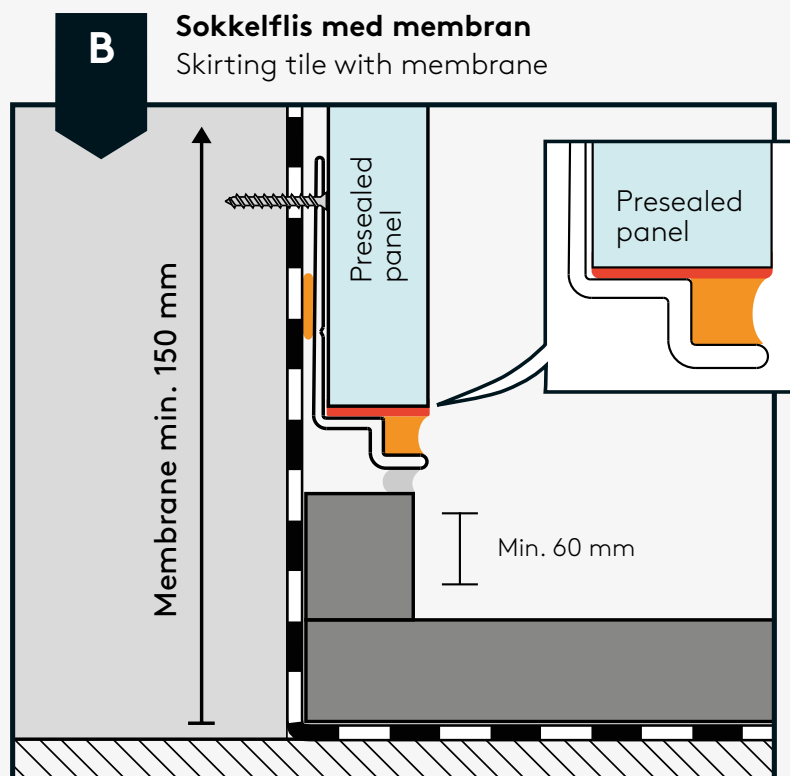
EAD 030437-00-0503 er referert til i:
EAD 030437-00-0503 is referred to in:



BVN 34.510

4B

AVSLUTNING MOT GULVMEMBRAN CHOOSE TRANSITION TO FLOOR MEMBRANE

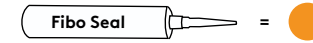


Universelt godkjente løsninger, testet i henhold til EAD 030437-00-0503.
Universal approved solutions, tested according to EAD 030437-00-0503.

EAD 030437-00-0503 er referert til i:
EAD 030437-00-0503 is referred to in:

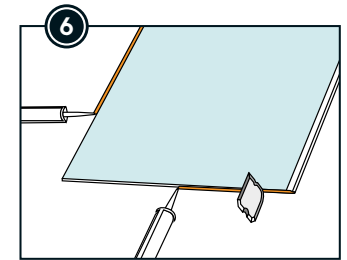
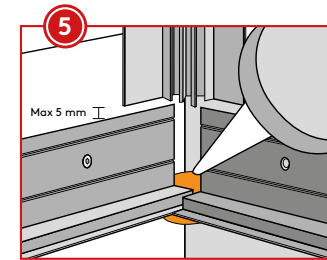
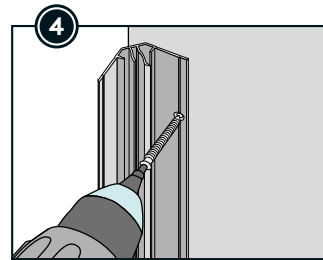
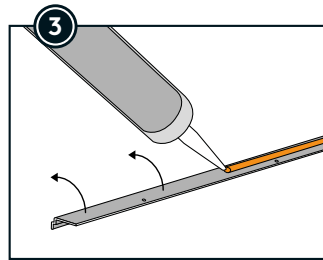
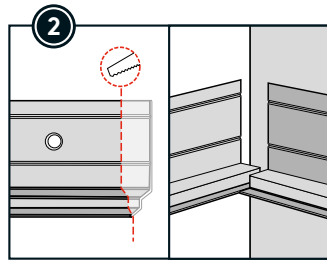
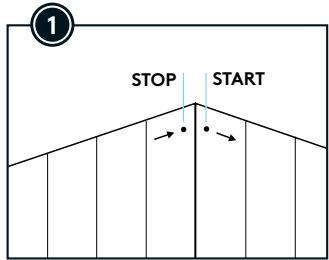
5A

MONTERING MED TO-DELT INNENDIG HJØRNEPROFIL INSTALLATION WITH TWO-PART INTERNAL CORNER PROFILE



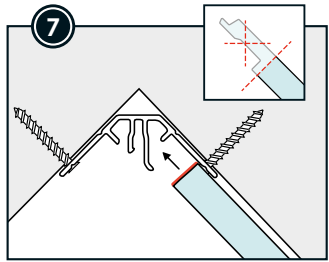
Velg en av våre hjørneprofiler: To-delt, skjult eller standard
Choose one of the following Corner Profiles: Two-part, hidden or standard

NB: Det anbefales bruk av vuggende bevegelse når man klikker panelene sammen for å sikre en god sammenføyning av Aqualock. Bruk av Fibo Grip vil gi økt kontroll under sammenføyning. Ved behov kan man slå forsiktig mot spikerleppen på høyre side av panelet med Fibo Tapping Tool for å sikre at panelet er helt i lås.
NB: It is recommended to use a cradling movement back and forth when clicking the panels together to ensure a good joining of the Aqualock. Using Fibo Grip will give increased control during joining. If necessary, you can carefully tap the nail lip on the right side of the panel with the Fibo Tapping Tool to ensure that the panel is completely locked.

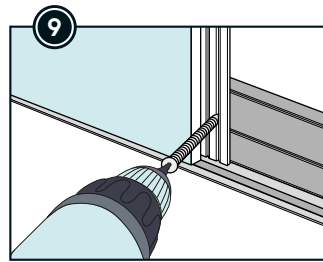
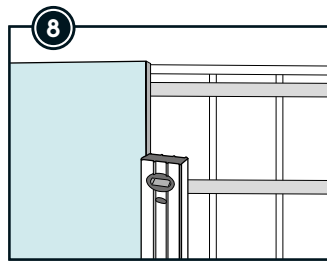


Crucial step to ensure a watertight result.

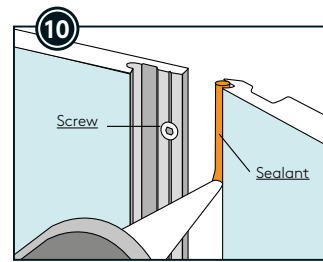
Preseal cut surfaces and panel bottom edge.



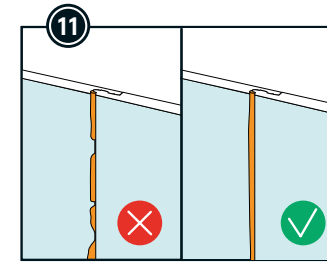
Remove Aqualock and preseal cut edges.



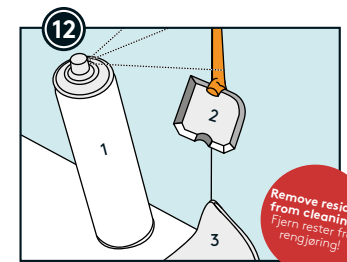
First screw through base profile.



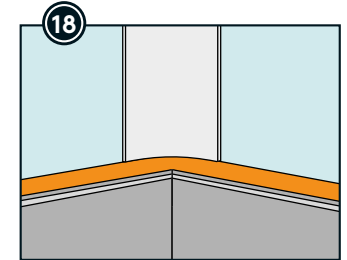
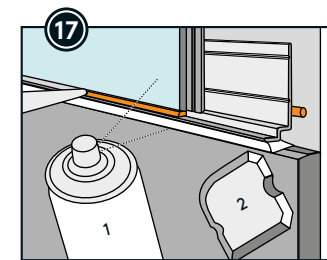
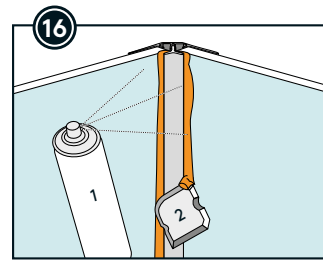
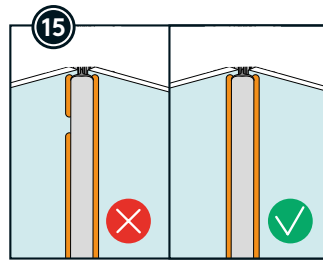
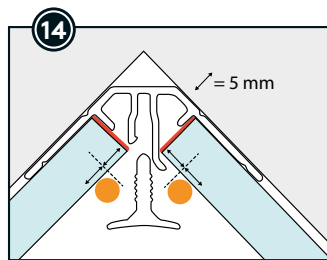
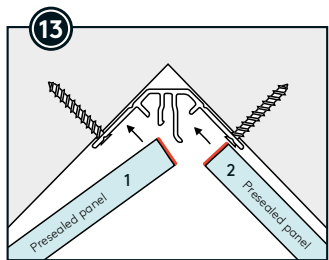
Screw distance c/c 200 mm. Mind the force of drilling to avoid excessive screw penetration.



Avoid use of excessive force when installing. This may harm the Aqualock.



Remove residue from cleaning!
Fjern rester fra rengjøring!



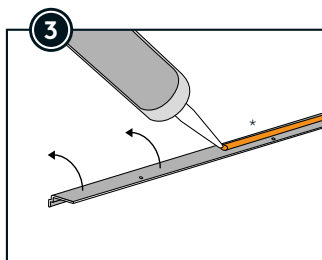
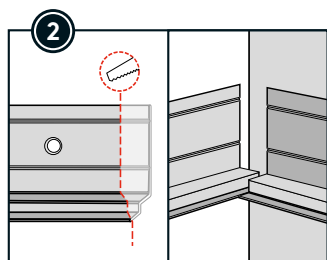
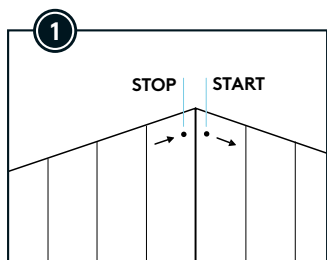
Do not place corner profile further down than this.

5B

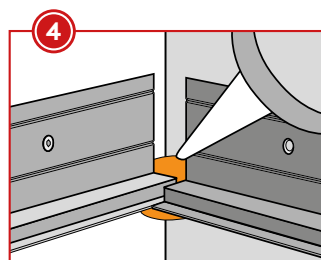
MONTERING MED SKJULT INNENDIG HJØRNEPROFIL INSTALLATION WITH HIDDEN INTERNAL CORNER PROFILE



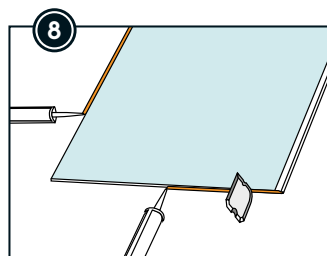
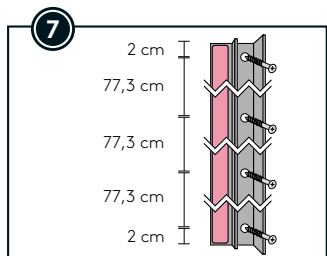
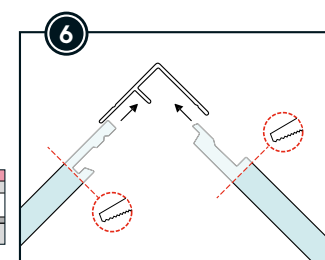
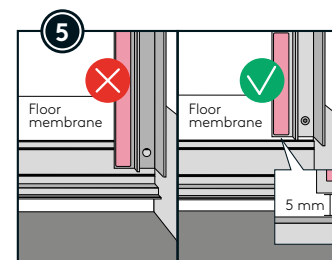
Velg en av våre hjørneprofiler: To-delt, skjult eller standard
Choose one of the following Corner Profiles: Two-part, hidden or standard



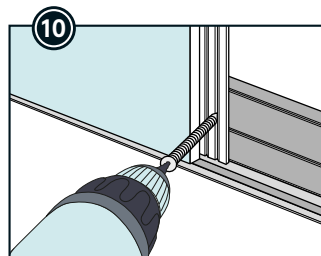
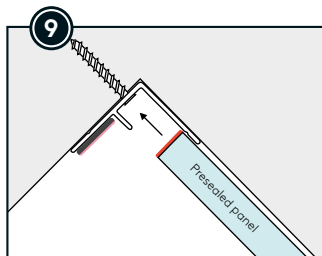
* Fibo Adhesive can be used instead of Fibo Seal.



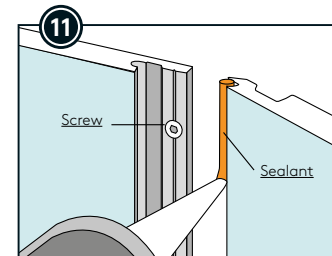
Crucial step to ensure a watertight result.



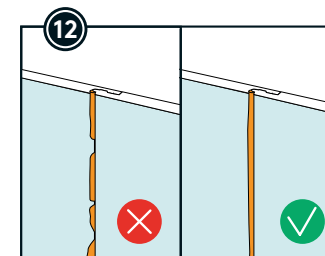
Pre-cut surfaces and panel bottom edge.



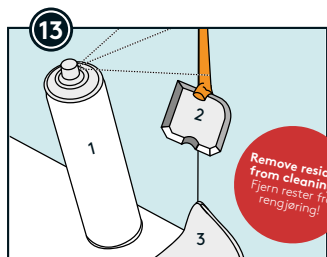
First screw through base profile.



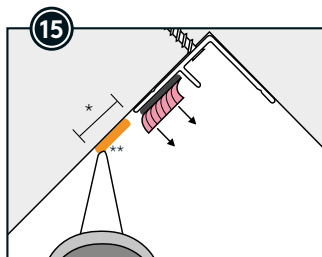
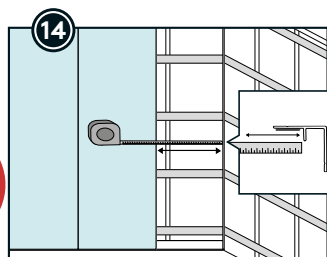
Screw distance c/c 200 mm. Mind the force of drilling to avoid excessive screw penetration.



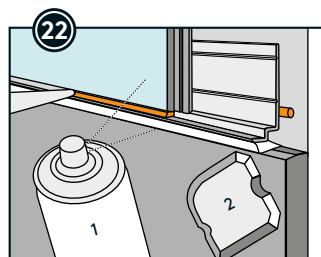
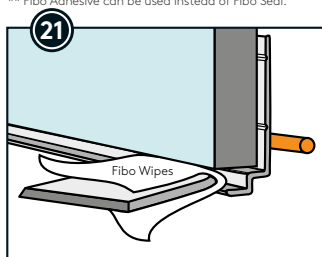
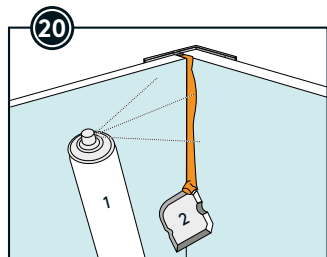
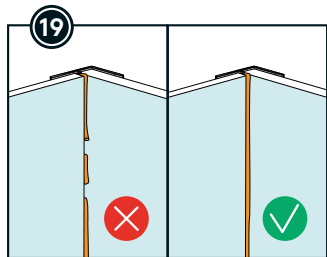
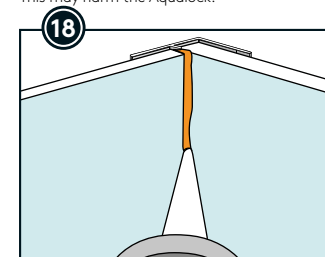
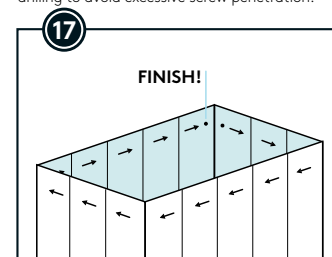
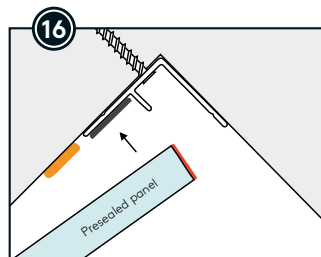
Avoid use of excessive force when installing. This may harm the Aqualock.



Remove residue from cleaning!
Fjern rester fra rengjøring!



* If backwall with strips, bead must be 18 mm.
With board backwall the bead should be 6 mm.
** Fibo Adhesive can be used instead of Fibo Seal.

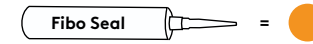


NB: Det anbefales bruk av vuggende bevegelse når man klikker panelene sammen for å sikre en god sammenføyning av Aqualock. Bruk av Fibo Grip vil gi økt kontroll under sammenføyning. Ved behov kan man slå forsiktig mot spikerleppen på høyre side av panelet med Fibo Tapping Tool for å sikre at panelet er helt i lås.

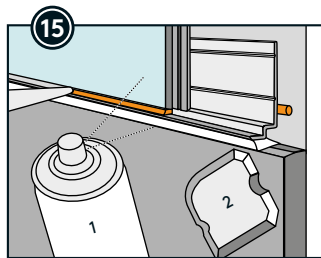
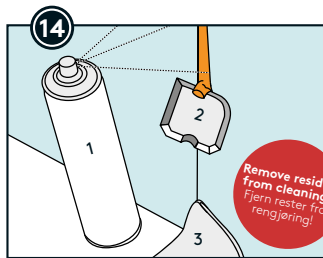
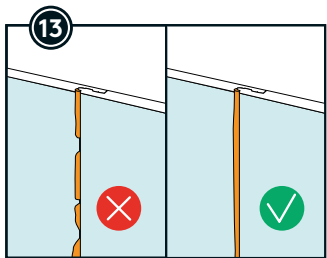
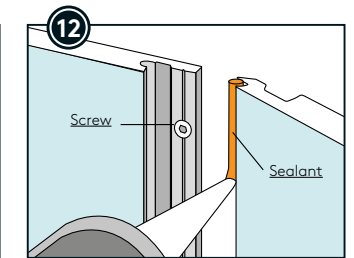
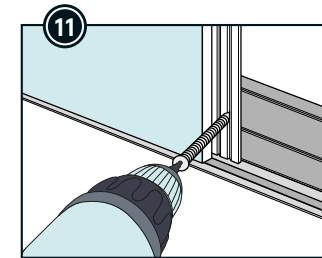
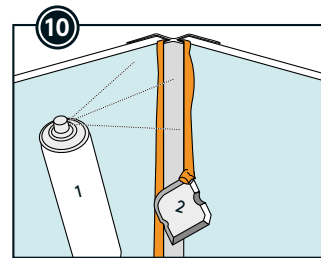
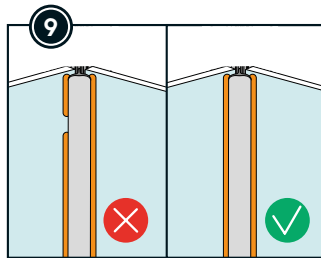
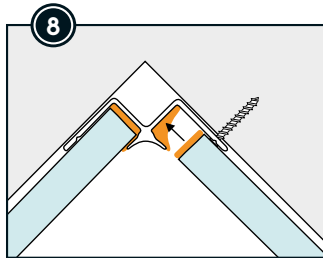
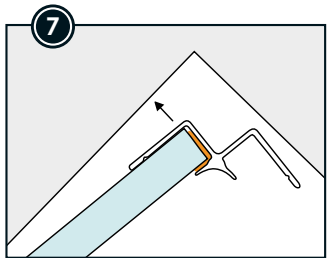
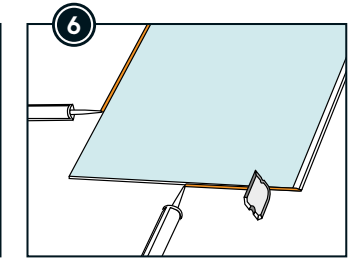
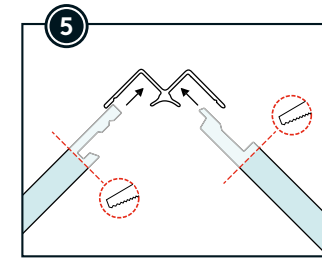
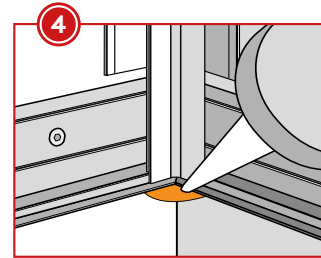
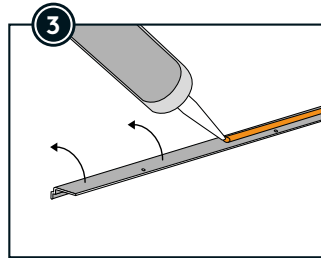
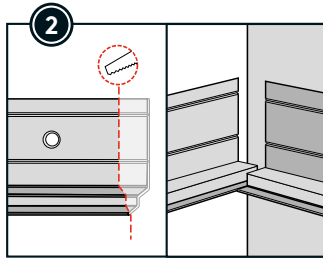
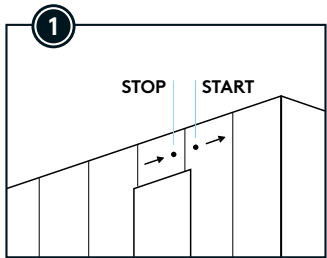
NB: It is recommended to use a cradling movement back and forth when clicking the panels together to ensure a good joining of the Aqualock. Using Fibo Grip will give increased control during joining. If necessary, you can carefully tap the nail lip on the right side of the panel with the Fibo Tapping Tool to ensure that the panel is completely locked.

5C

MONTERING MED STANDARD INNVEDIG HJØRNEPROFIL INSTALLATION WITH STANDARD INTERNAL CORNER PROFILE



Velg en av våre hjørneprofiler: To-delt, skjult eller standard
Choose one of the following Corner Profiles: Two-part, hidden or standard



Avoid use of excessive force when installing.
This may harm the Aqualock.

6

SKJØTEPROFIL | UTVENDIG
HJØRNEPROFIL | AVSLUTNING MOT TAK
STACKING PROFILE | EXTERNAL CORNER
PROFILE | SEALING FINISH

