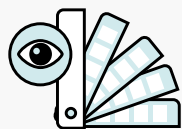


VITO FIRE PANEL INSTALLATION INSTRUCTIONS



STORAGE

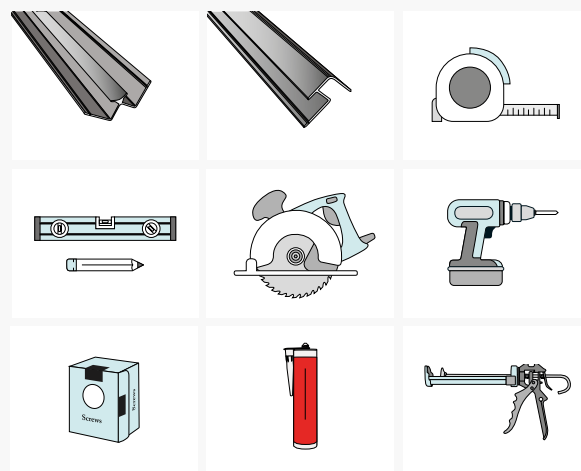
Store the panels flat in the packaging in a dry place until you are ready to fit them. It is important to acclimatise the panels to the expected ambient environment before fitting.



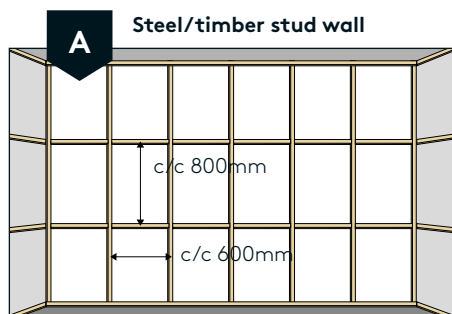
VISUAL INSPECTION

Inspect the colour and check for defects prior to fitting.

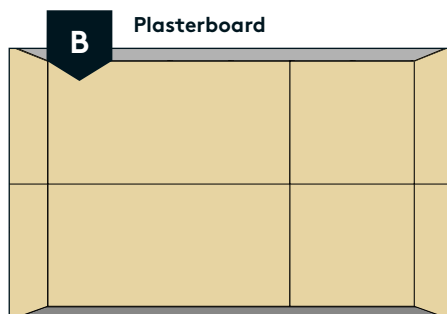
RECOMMENDED ACCESSORIES



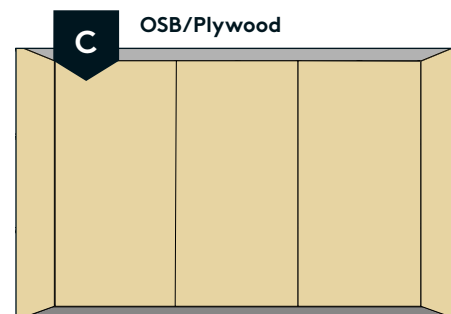
SELECT YOUR PREFERRED BACK WALL STRUCTURE



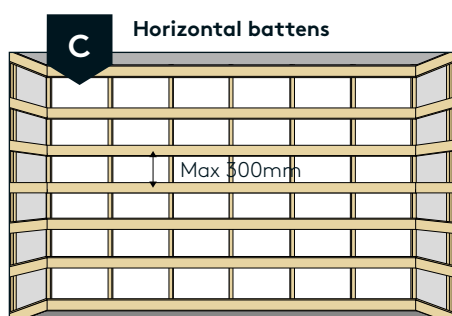
Timber or steel studs with recommended spacing as shown in the illustration.



We recommend fitting plasterboards horizontally due to the seams. Min. 12.5 mm thickness. Add noggings at intervals of cc 800 behind the plasterboard, alternatively use two layers of plasterboard. Affix the boards to the studs behind.



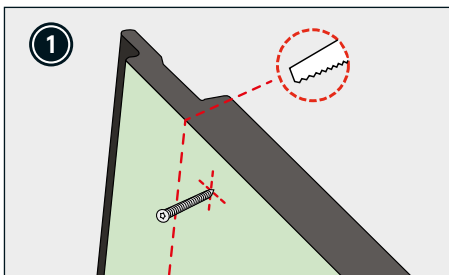
May be installed horizontally or vertically. Minimum recommended thickness is 15 mm OSB or 12 mm plywood. No need for noggings behind the sheets. Vito Fire Panel can be fixed directly onto the sheets.



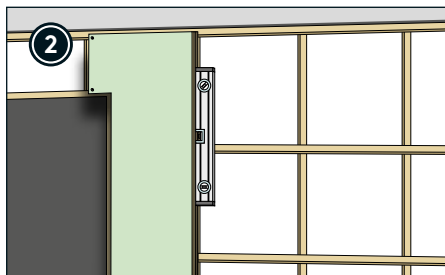
For the battens we recommend using formwork timber min. 21x98 mm or plywood 12x200 mm. Affix the Vito Fire Panel with two screws on each batten.

PAY CLOSE ATTENTION TO THE FITTING INSTRUCTIONS FOR THE BEST RESULTS

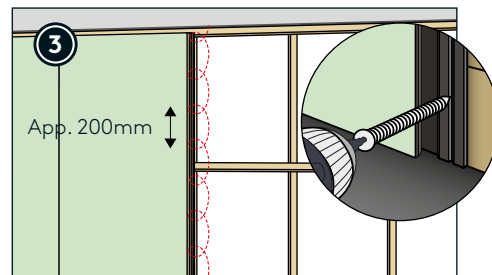
! NB: We recommend pre-drilling holes for the screws in the lip (4.2–4.5 mm drill bit) for secure fastening.



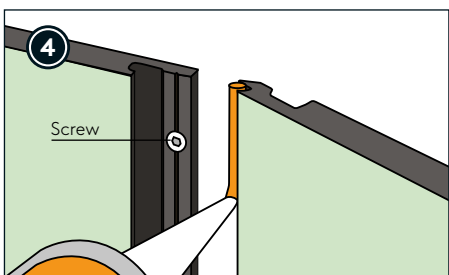
1 Remove the click lock on the left-hand side of the first panel. The red cross shows the location of the screw.



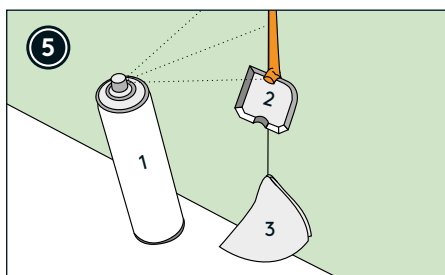
2 Start fitting above door. Ensure that the first panel is level.



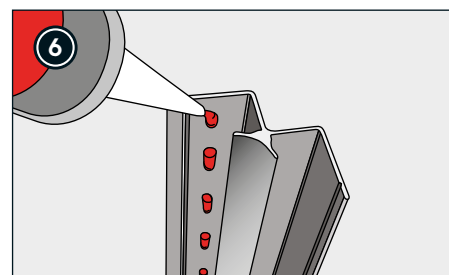
3 Affix with screws at a distance of approx. 200 mm. Recommended screws art. no. 810030.



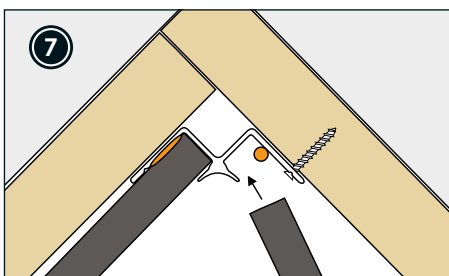
4 You can use Fibo Seal on the click lock to reduce the risk of cracking after drying. *Not required.*



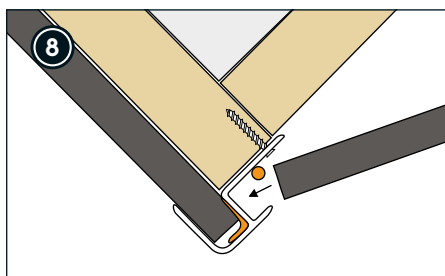
5 You can use Fibo accessories to remove excess Fibo Seal.



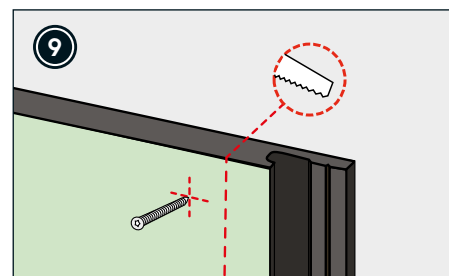
6 A small amount of sealant can be applied to act as a cushion between the profile and panel and reduce the risk of noise/rattling.



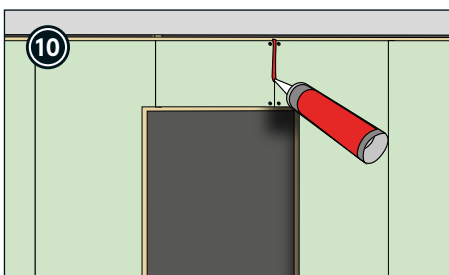
7 Apply sealant to the internal corner profile to reduce noise and improve its grip.



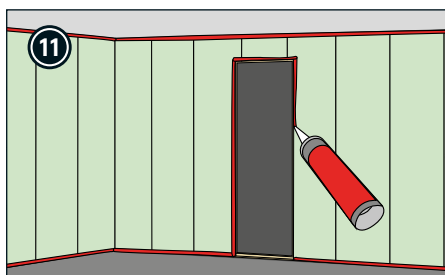
8 Apply sealant to the external corner profile to reduce noise and improve its grip.



9 Cut to size and remove the click lock from the last panel.



10 Apply fire-resistant sealant to the end joint above doors.



11 Apply fire-resistant sealant around the perimeter of the system to seal it.