

VITO WALL PANEL FOR DRY ROOM INSTALLATION INSTRUCTION



STORAGE

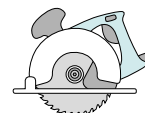
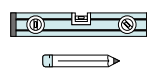
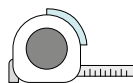
Keep panels stored dry and flat in package until installation. We recommend acclimatisation before installing.



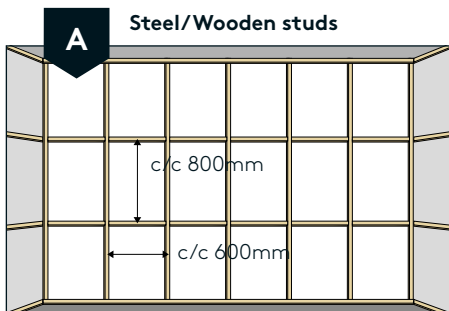
VISUAL CONTROL

Check for product flaws before installation. Colour differences may occur on natural products

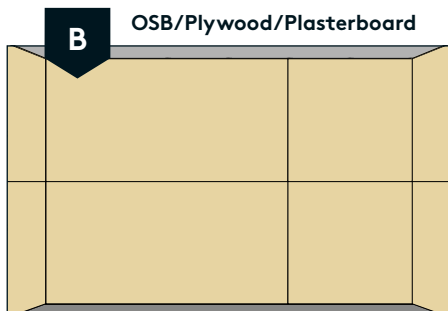
RECOMMENDED ACCESSORIES



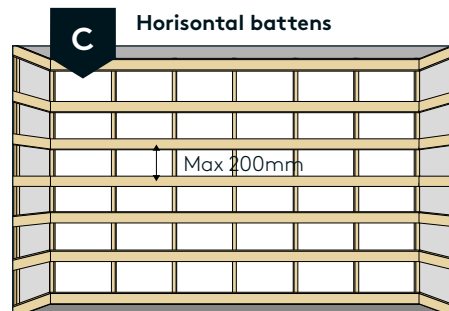
CHOOSE PREFERRED BACKWALL OPTIONS



Wooden or steel studs with recommended distances as shown in the illustration.

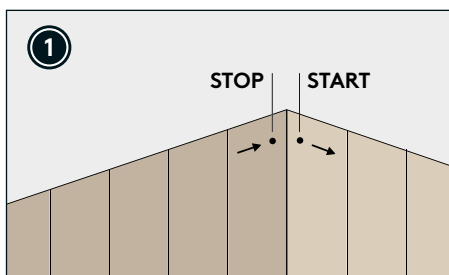


Full-covering plasterboard 240x120 cm, mounted horizontally or vertically. Mark the rear studs for secure fastening if use of plasterboards.

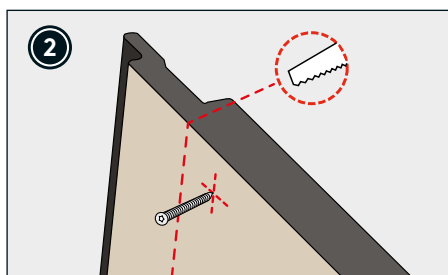


Horizontal battens (f.ex. rough wood). Max opening between battens 200mm.

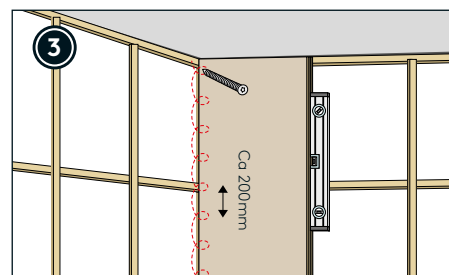
INSTALLATION ACCORDING TO THE INSTALLATION INSTRUCTIONS ENSURES THE BEST RESULT



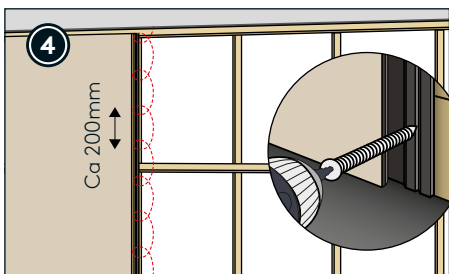
Installation should start and stop in a corner for best result.



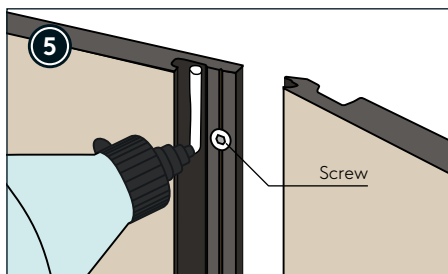
Remove female part of the lock when fitting the first panel. First panel must be fastened with screws on both sides.



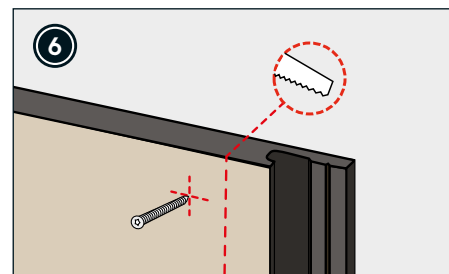
Make sure you fit the first panel in a level position and fasten with screws.



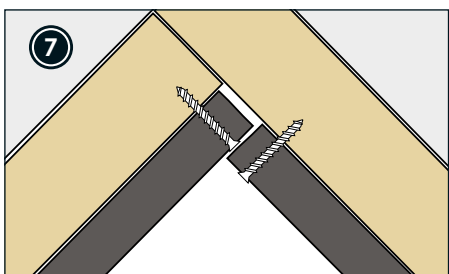
Ideal screw distance is aprx 20 cm. Recommended screw is art. nr 810030 in Fibo pricelist.



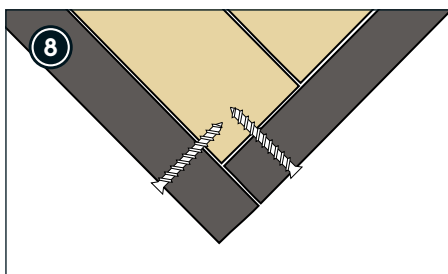
Joint the panels with lock system, Use cradling movements to avoid harm to the lock.



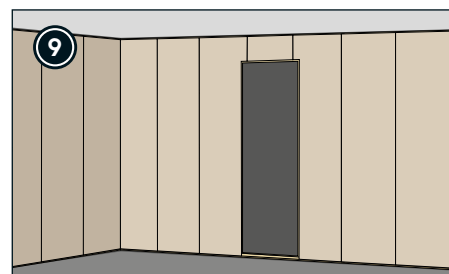
Remove male part of the lock and adjust the width for the last panel.



Remove lock parts and fasten with screws in inner corner.



Remove lock parts and fasten with screws in outer corner.



Use preferred moldings/frame to achieve the perfect finish.

To reduce risks of opening in joints due to low humidity, wooden glue can be used during installation (5). This is not a requirement.