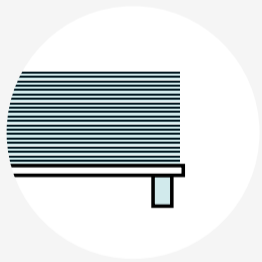




VITO FIRE PANELS FOR DRY ROOMS INSTALLATION INSTRUCTIONS



DRY ROOMS ONLY



STORAGE/TERMS OF CONDITION

Keep the panels stored dry and flat in their packaging until installation. Humidity: 30-60%. Temperature: 15-30 C°. Panels must be kept at minimum 3 days (72 h) in these conditions before installation.



VISUAL INSPECTION

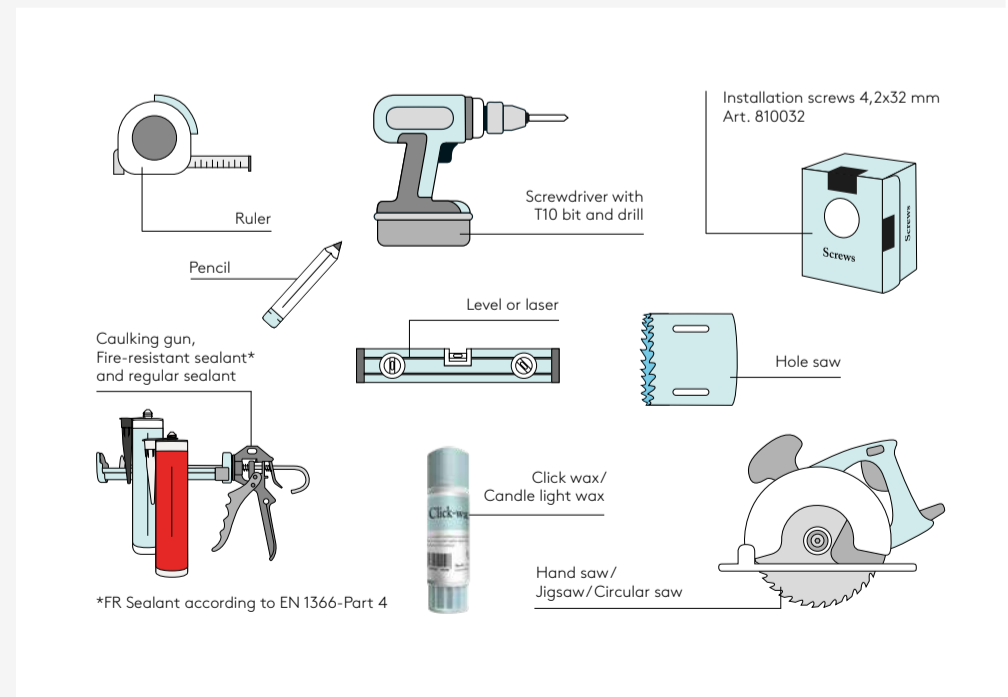
Check for product flaws before installation. Colour differences may occur on natural products.



DO NOT USE IN SHOWERS OR OTHER WET ROOMS!

These panels are designed solely for dry rooms and are not suitable for installation in wet areas.

RECOMMENDED TOOLS

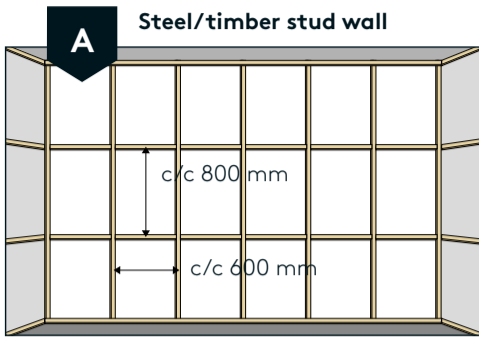


*FR Sealant according to EN 1366-Part 4

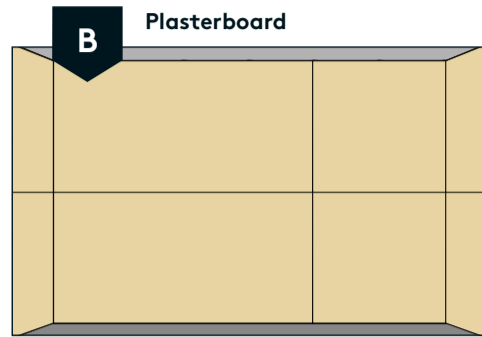


SELECT YOUR PREFERRED BACK WALL STRUCTURE

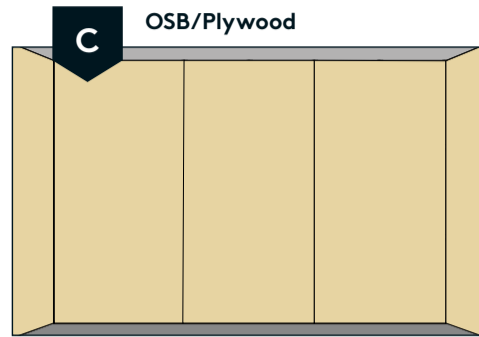
Make sure that the backwall is leveled, and that the corners are straight. It is important that uneven walls are corrected before installation.



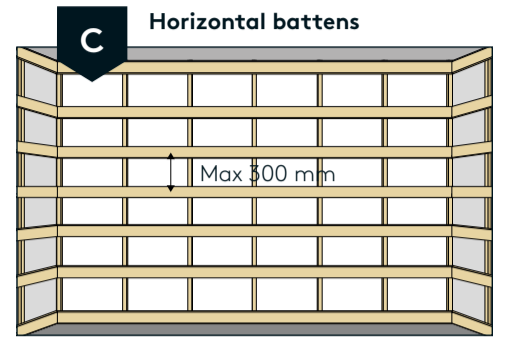
Timber or steel studs with recommended spacing as shown in the illustration.



We recommend fitting plasterboards horizontally due to the seams. Min. 12.5 mm thickness. Add noggings at intervals of cc 800 behind the plasterboard, alternatively use two layers of plasterboard. Affix the boards to the studs behind.



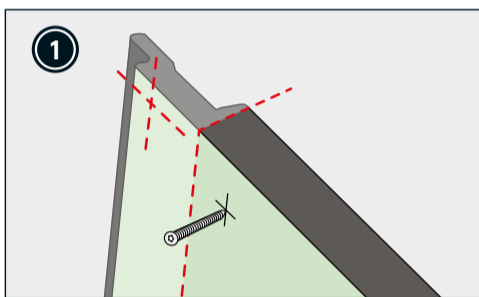
May be installed horizontally or vertically. Minimum recommended thickness is 15 mm OSB or 12 mm plywood. No need for noggings behind the sheets. Vito Fire Panel can be fixed directly onto the sheets.



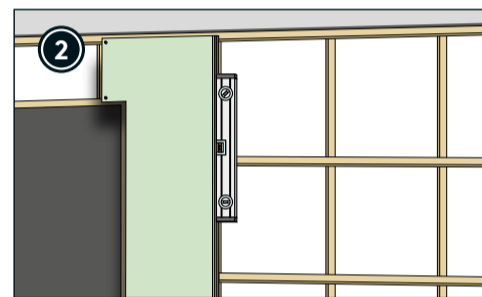
For the battens we recommend using formwork timber min. 21 x 98 mm or plywood 12 x 200 mm. Affix the Vito Fire Panel with two screws on each batten.

PAY CLOSE ATTENTION TO THE FITTING INSTRUCTIONS FOR THE BEST RESULTS

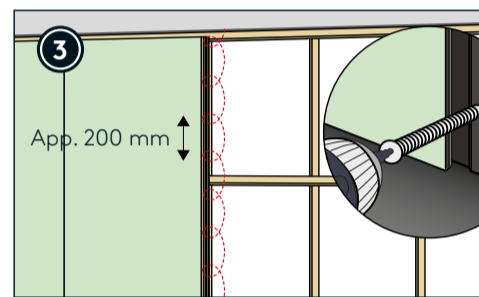
! NB: We recommend pre-drilling holes for the screws in the screw-lip (4.2–4.5 mm drill bit) for secure fastening.



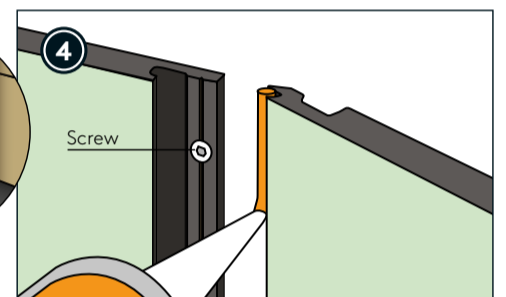
Remove the click lock on the left-hand side of the first panel. The red cross shows the location of the screw.



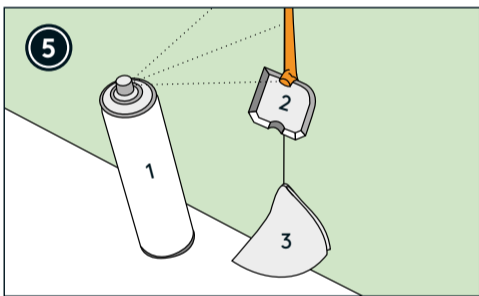
Start fitting above door. Ensure that the first panel is level.



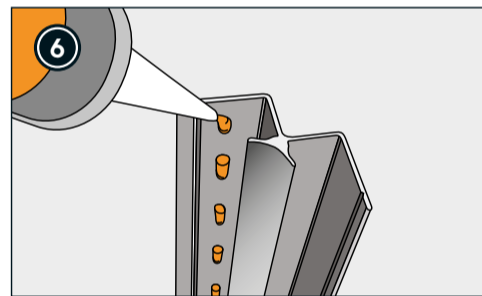
Affix with screws at a distance of approx. 200 mm. Recommended screws art. no. 810032.



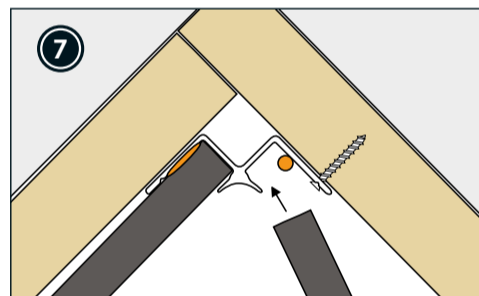
Use Fibo Seal on the click-lock to reduce the risk of cracking after drying. Use Fibo Click-wax behind the click (ref. image no. 12)



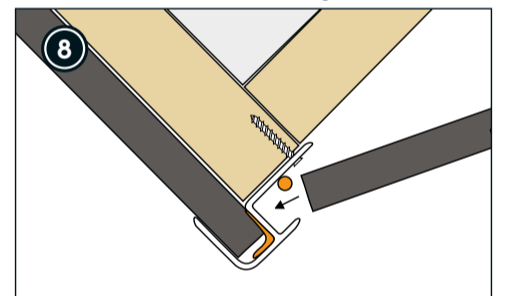
You can use Fibo accessories to remove excess Fibo Seal.



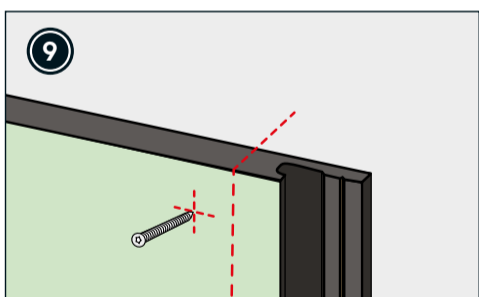
A small amount of sealant can be applied to act as a cushion between the profile and panel and reduce the risk of noise/rattling.



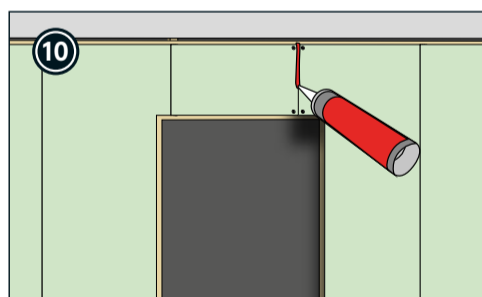
Apply sealant to the internal corner profile to reduce noise and improve its grip.



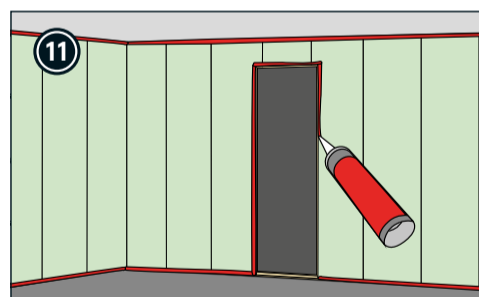
Apply sealant to the external corner profile to reduce noise and improve its grip.



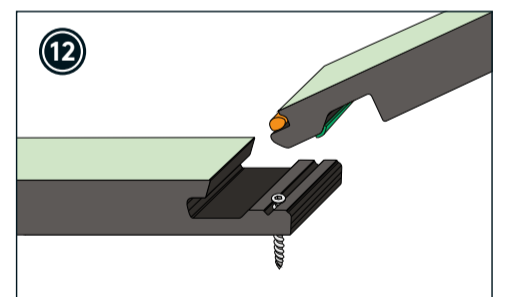
Cut to size and remove the click lock from the last panel.



Apply fire-resistant sealant to the end joint above any doors. FR Sealant according to EN 1366-Part 4.



Apply fire-resistant sealant around the perimeter of the system to seal it. FR Sealant according to EN 1366-Part 4.



Apply fire-resistant sealant around the perimeter of the system to seal it. FR Sealant according to EN 1366-Part 4.

FOR USE IN DRY ROOMS ONLY



ESSENTIAL TIPS FOR OPTIMAL RESULTS

If the click joint is challenging to assemble, we recommend using Fibo Click Wax or candle wax to facilitate the installation. Pre-drilling is recommended for the best result.