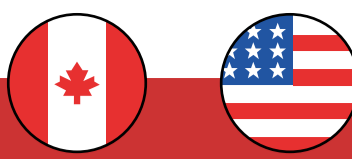


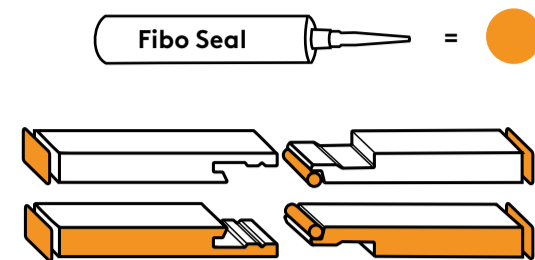
Installation North America only



For full installation videos of screwing on gluing the panels scan QR code or visit fibosystemusa.com

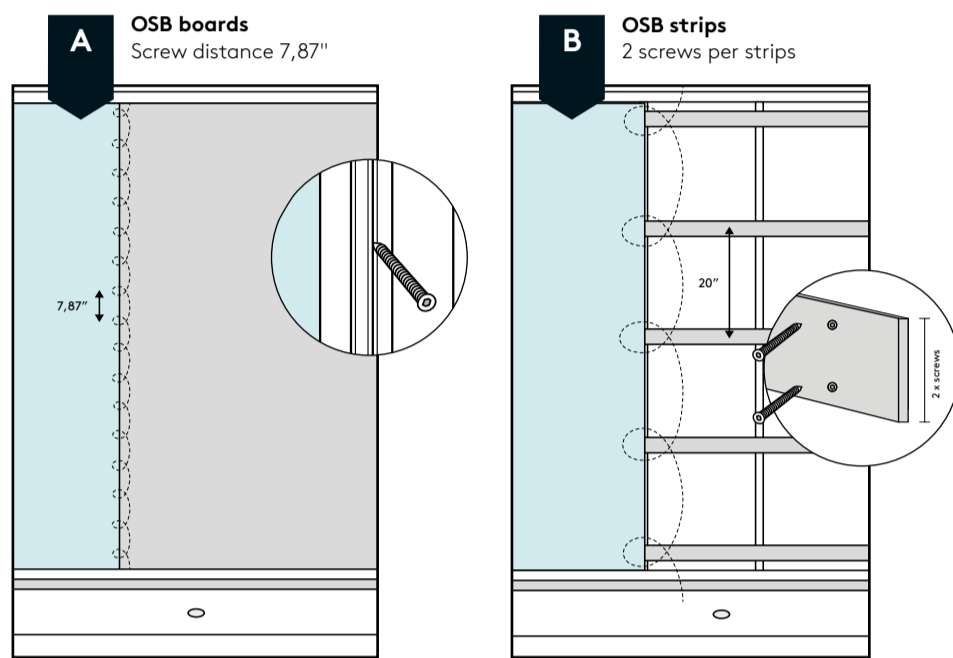
HOW TO SEAL FIBO WALL PANELS

For waterproof system, apply Fibo Seal as shown. All cut surfaces, click-joints and bottom edge of the panel must be sealed with Fibo Seal, including drilled holes for pipe penetrations. It is not mandatory to use sealant on cut surfaces outside the wet zone area, but to reduce the risk of joints cracking when drying out it should be used in all joints. For best results when sealing base profiles, internal corner profiles, and other visible joints, it is recommended to use masking tape. Make sure to clean all exposed surfaces before sealing. Incorrect installation according to this installation manual will void your warranty and terms of claim. Use Fibo Seal Remover and Fibo Wipes to remove excessive sealant. Film from cleaning accessories must be removed immediately from panel surface.



1 CHOOSE PREFERRED BACKWALL

Make sure the backwall is level and the corners are straight 90°. For uneven walls we recommend using OSB Strips and if necessary extra shims to even out.

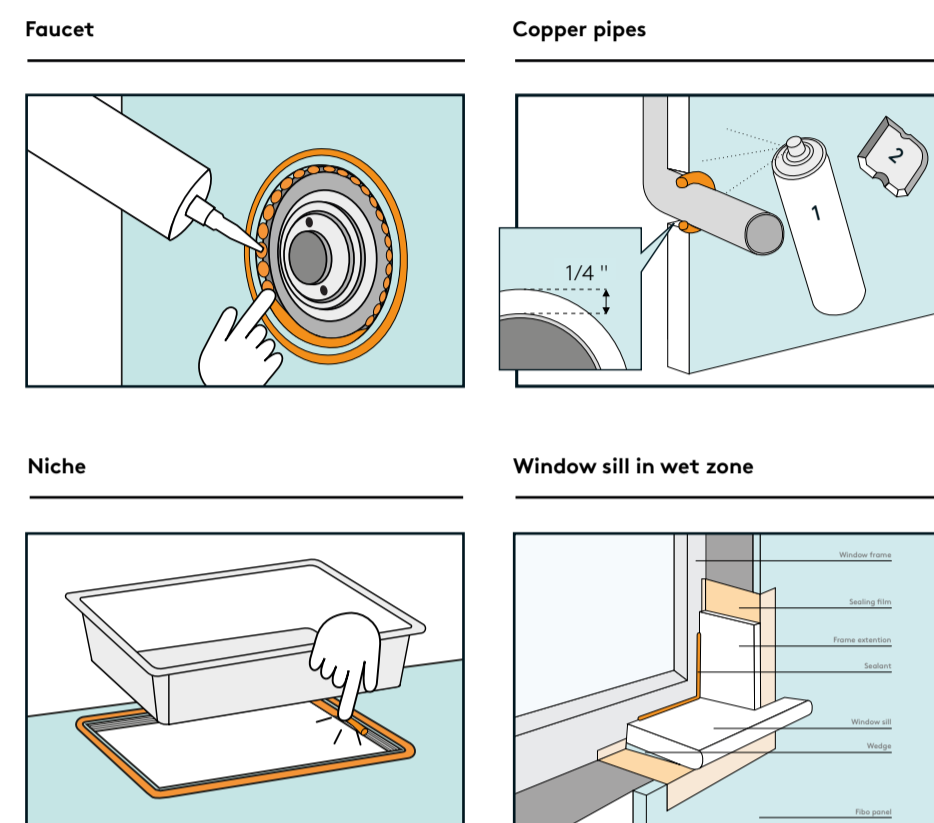


WARNING: This product can expose you to chemicals including formaldehyde and acetaldehyde, which is known to the State of California to cause cancer. For more information, go to www.P65Warnings.ca.gov

WARNING: Fumes Hazard: The fumes from the Fibo Seal Remover used by the installer can be harmful if used in an unventilated room. Always work in a well-ventilated area. To keep the area well-ventilated, open windows and use exhaust fans. If adequate ventilation is not achievable or practical, use respiratory protective equipment.

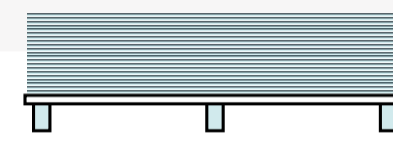


2 FAUCETS, NICHES, PIPE PENETRATIONS AND WINDOW SILLS



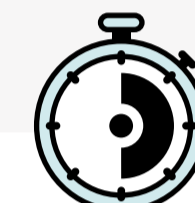
Wall panel Veggpanel

READ BEFORE OPENING PACKAGE!



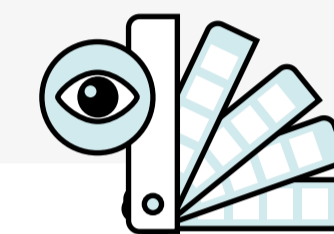
Storage | Lagring
Keep panels dry stored and flat in package until installation.

Lagre panelene tørt og liggende i emballasjen frem til monteringen.



Min. 72 hours | Min. 72 timer
Store the panels flat in their packaging at normal room conditions for at least 72 hours (longer if previously stored in a cold area). The relative humidity (RH) must be between 50% and 60% before and during installation. If RH after installation rises above 60% or falls below 50%, joint opening or bowing outside tolerance may occur.

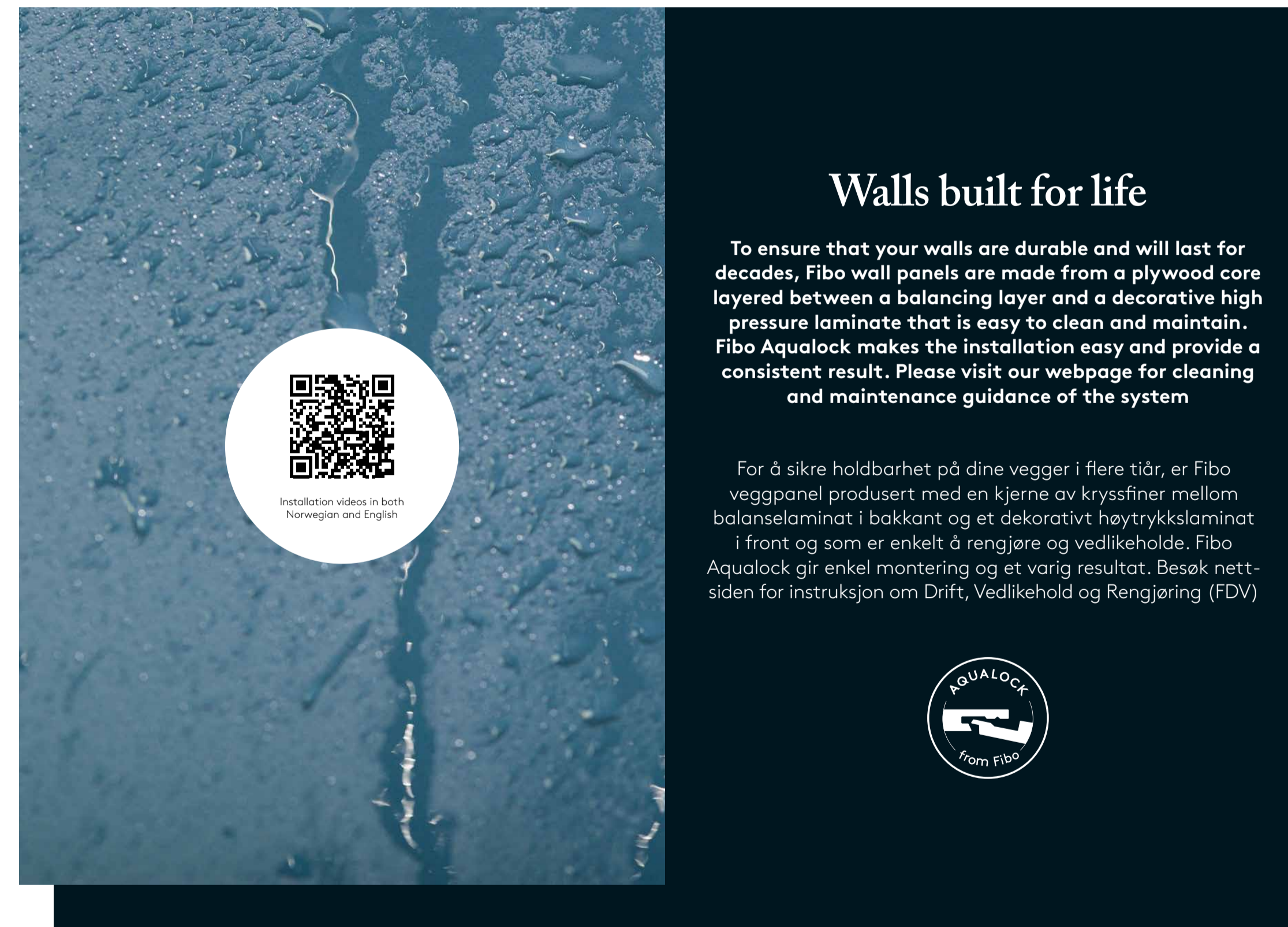
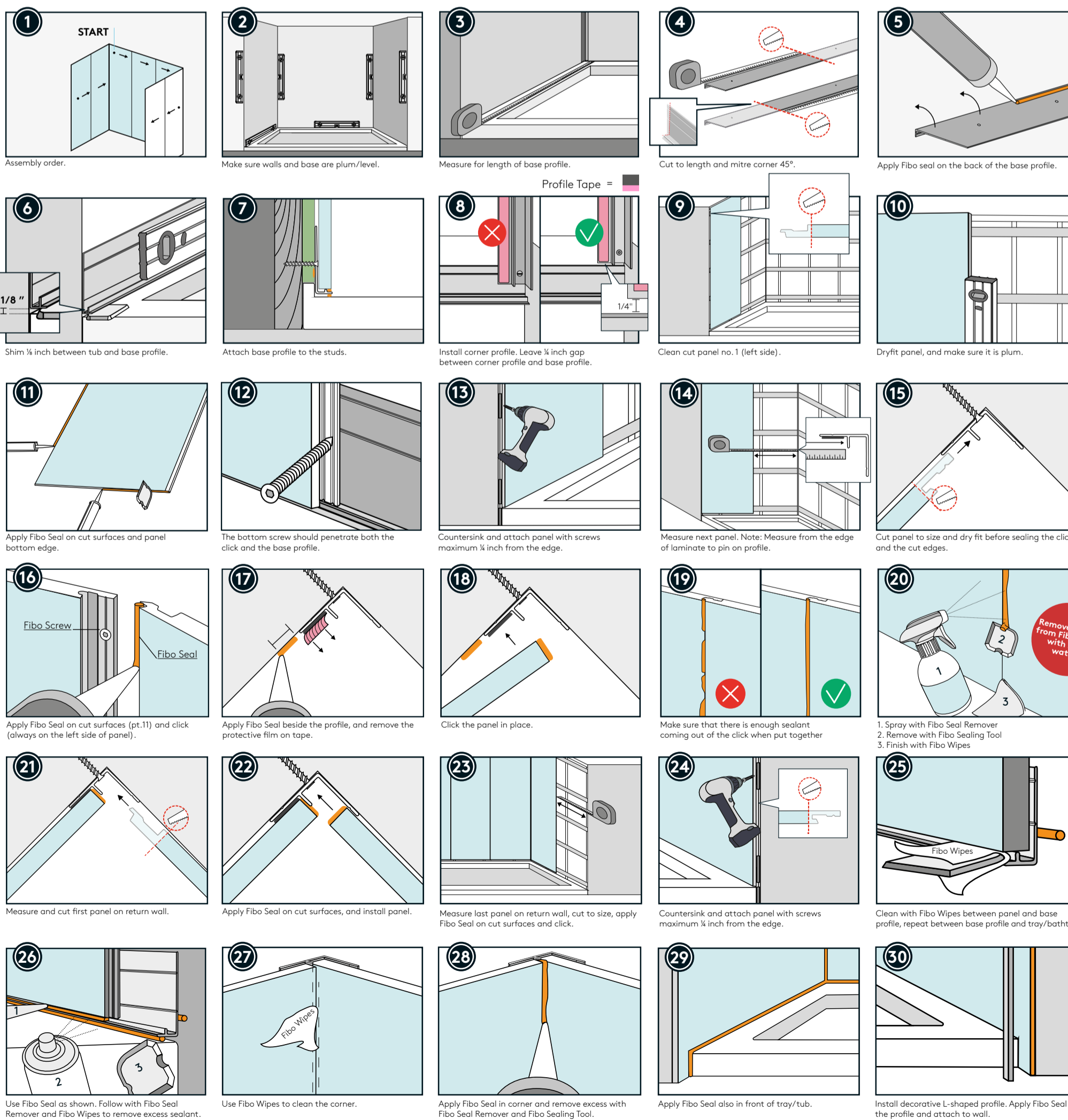
Oppbevar panelene flatt i emballasjen under normale romforhold i minst 72 timer (lenger hvis de har vært lagret kaldt). Relativ luftfuktighet (RF) i rommet må være mellom 30 % og 60 % før og under monteringen. Hvis RF etter monteringen overstiger 60 % eller faller under 30 %, kan det oppstå gliper/kuving utenfor toleransen.



Visual control | Visuell kontroll
Colourmatch and check for flaws before installation.

Kontroller farge og sjekk for andre feil før monteringen.

3 ALCOVE - STANDARD WALLPANEL



Walls built for life

To ensure that your walls are durable and will last for decades, Fibo wall panels are made from a plywood core layered between a balancing layer and a decorative high pressure laminate that is easy to clean and maintain. Fibo Aqualock makes the installation easy and provides a consistent result. Please visit our webpage for cleaning and maintenance guidance of the system



Installation videos in both Norwegian and English

Før å sikre holdbarhet på dine vegger i flere tiår, er Fibo veggpanel produsert med en kjerne av kryssfiner mellom balanselaminat i bakkant og et dekorativt høytrykkslaminat i front og som er enkelt å rengjøre og vedlikeholde. Fibo Aqualock gir enkel monteringen og et varig resultat. Besøk nettsiden for instruksjon om Drift, Vedlikehold og Rengjøring (FDV)



Inspiration and installation videos at fibosystem.com / E-mail: info@fibosystem.com

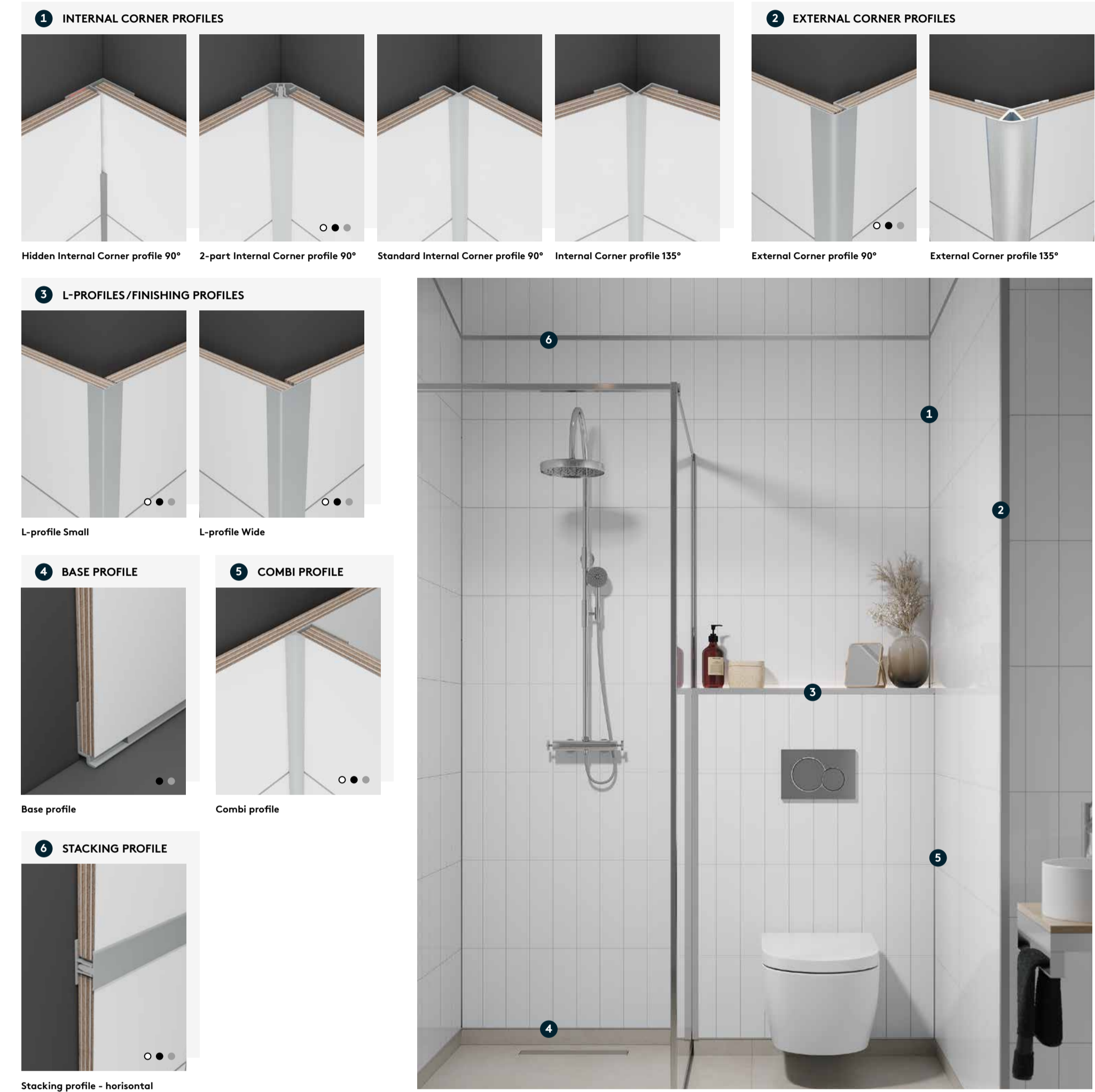
FIBO ACCESSORIES | FIBO TILBEHØR

Fibo replaces vapor barrier when all joints are sealed.

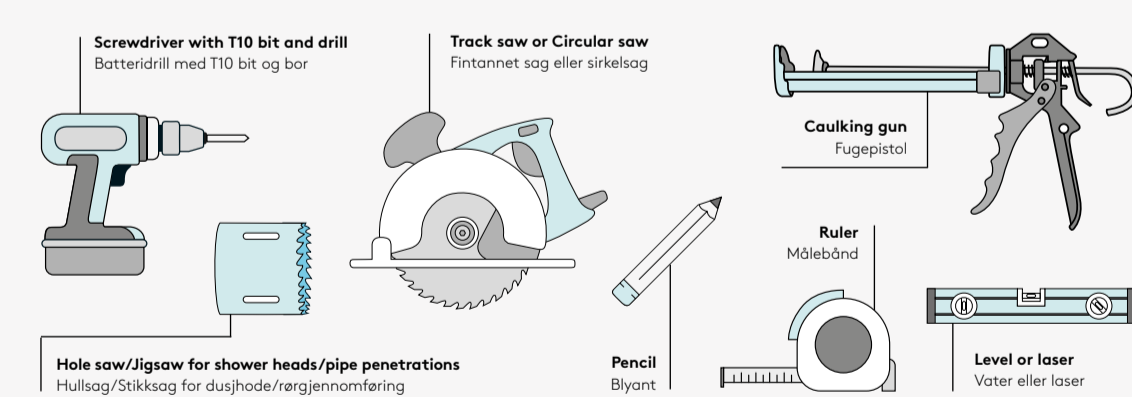
Fibo erstatter dampspærre på yttervegg når alle overganger er forsejlet.



Remove residue from Fibo Wipes immediately with soap water! Vask bort rester fra Fibo Wipes umiddelbart med såpevann!



TOOLS YOU NEED | VERKTØY DU TRENGER



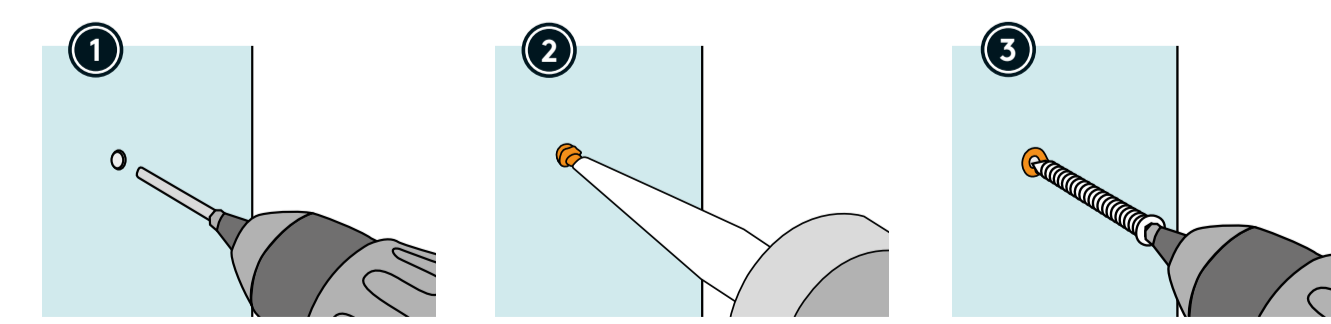
WARNING: Power tools must be used with caution to prevent damaged panels. ADVARSEL: Verktøy må håndteres med forsiktighet for å unngå skade på paneler.

CUTTING PANELS | KUTTING AV PANEL



NB: We recommend using a gentle cradling motion back and forth when clicking the panels together to ensure a proper Aqualock connection. Using Fibo Grip provides better control during joining. If needed, you can lightly tap the nail lip on the right-hand side of the panel with the Fibo Tapping Tool to make sure the panel is fully locked. NB: Det anbefales bruk av vuggende bevegelser når man klikker panelene sammen for å sikre en god sammenføyning av Aqualock. Bruk av Fibo Grip vil gi økt kontroll under sammenføyningen. Ved behov kan man også forsiktig slå spærrelippen på høyre side av paneler med Fibo Tapping Tool for å sikre at panelet er helt låst.

HOW TO SEAL SCREW HOLES | HVORDAN TETTE SKRUEHULL I PANEL



CLEANING & MAINTENANCE | RENGJØRING & VEDLIKEHOLD

Extend the life of the sealant by correct cleaning, in accordance with "Cleaning & Maintenance" documents at fibosystem.com. In particular, sealant in the base profile and hidden internal corner profile should be cleaned regularly. If the sealant becomes brittle or damaged over time, it must be treated immediately.

Førleng fugemassens levetid ved korrekt rengjøring. I henhold til FDV på Fibo.no. Spesielt fugemasse i sokkelprofil og skjult innvendig hjørne for fugging bør rengjøres regelmessig. Hvis fugemasse blir sprø eller skadet over tid, må den behandles umiddelbart.

A moist Fibo Sponge can be used on particularly difficult surfaces stains. Follow the instructions for use on the product's packaging.

Fuktet melaminsvamp (Fibo Sponge) kan brukes på særlig vanskelige flekker. Følg bruksanvisning på produktets emballasje.

FIBO ONLINE | FIBO PÅ NETT

- www.fibosystem.com
- www.fibo.no
- www.fibo.se
- www.fibosystemusa.com
- www.fibo.co.uk
- www.fibosystem.fi

For more information and warranty conditions. For mer informasjon og garantibetingelser.

